

<http://stores.ebay.com/Ancestry-Found>

nia



THE LIBRARY
OF
THE UNIVERSITY
OF CALIFORNIA
LOS ANGELES

INTERNET
ARCHIVE

Digitized for Microsoft Corporation
by the Internet Archive in 2007.

From University of California Libraries.

May be used for non-commercial, personal, research,
or educational purposes, or any fair use.

May not be indexed in a commercial service.





CENTENNIAL ALBUM

OF

NASHVILLE, TENNESSEE

CONTAINING

EXPOSITION BUILDINGS,
OFFICERS OF THE EXPOSITION,
REPRESENTATIVE CITIZENS,
PUBLIC BUILDINGS,
BUSINESS HOUSES,
AND
PRIVATE RESIDENCES.



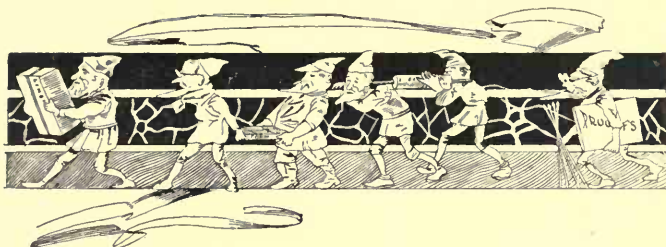
PREPARED BY

J. PROUSNITZER & COMPANY,

1896.

Univ Calif - Digitized by Microsoft®

Branden
NASHVILLE, TENN.



... Introductory

THE first intention of the publisher of the Centennial Album was to present to the public the pictures of the buildings and officers of the forthcoming Tennessee Centennial Exposition. As the work progressed, however, it was decided to add to these the pictures of some of Nashville's prominent citizens, as well as its public buildings, business houses, churches, and private residences.

While this work contains only a small part of what might be given, it nevertheless enables the stranger to form some idea of the importance of the city of Nashville.

J. PROUSNITZER,

PUBLISHER.

Univ Calif - Digitized by Microsoft®

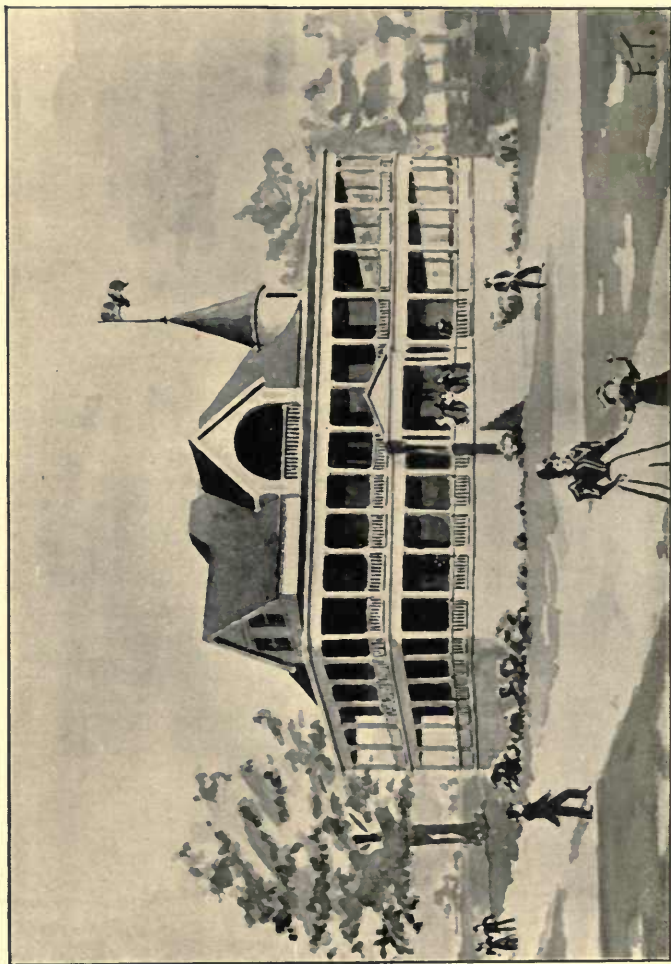
443303



J. W. THOMAS.

PRESIDENT NASHVILLE, CHATTANOOGA & ST. LOUIS RAILWAY COMPANY

AND
Univ. Calif. - Digitized by Microsoft®
PRESIDENT TENNESSEE CENTENNIAL EXPOSITION.



FREDERICK THOMPSON, DEL.

ADMINISTRATION BUILDING.



PHOTO BY OTTO GIERS.

VAN L. KIRKMAN,

FIRST VICE PRESIDENT TENNESSEE CENTENNIAL EXPOSITION.

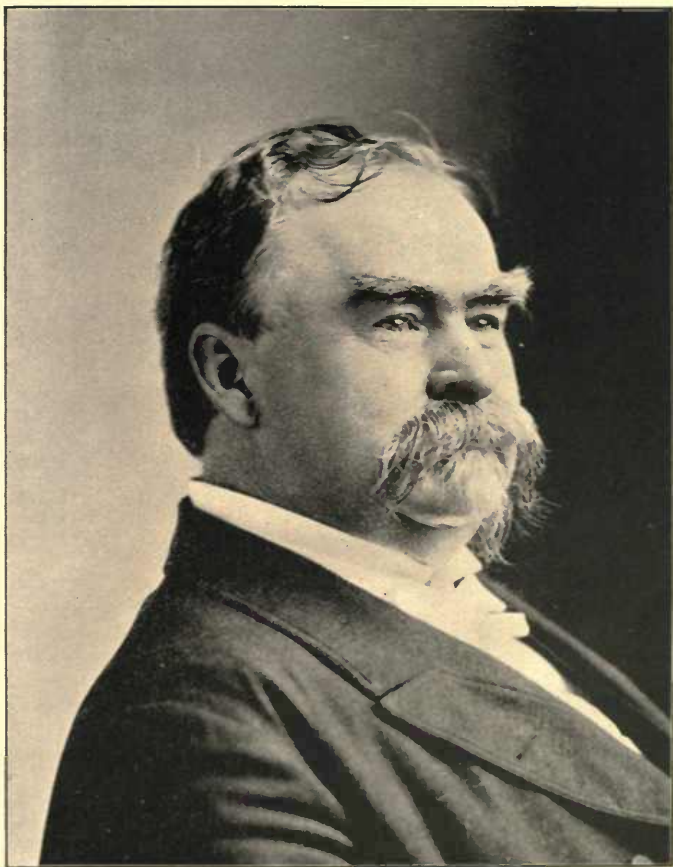


PHOTO BY OTTO GIERS.

DUDLEY, ARCHITECT.

JACKSON BUILDING.

Univ Calif - Digitized by Microsoft®



GEN. W. H. JACKSON.



PHOTO BY OTTO GIER.

COLE BUILDING.

Univ Calif - Digitized by Microsoft®

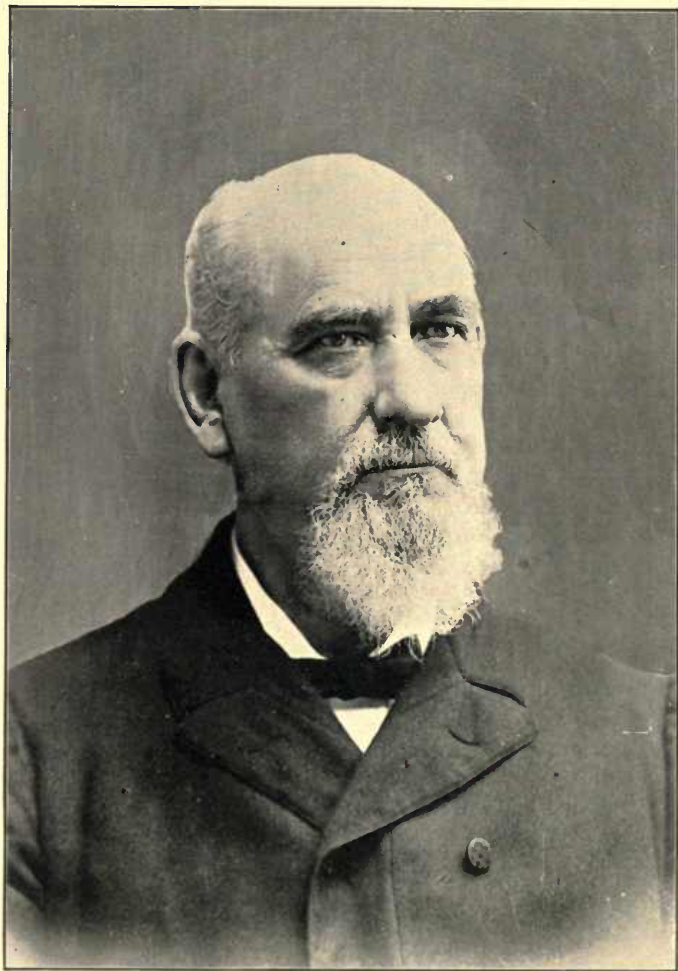


PHOTO BY CALVERT BROS. & TAYLOR.

E. W. COLE.



JUL. C. EWICKER, ARCHITECT.

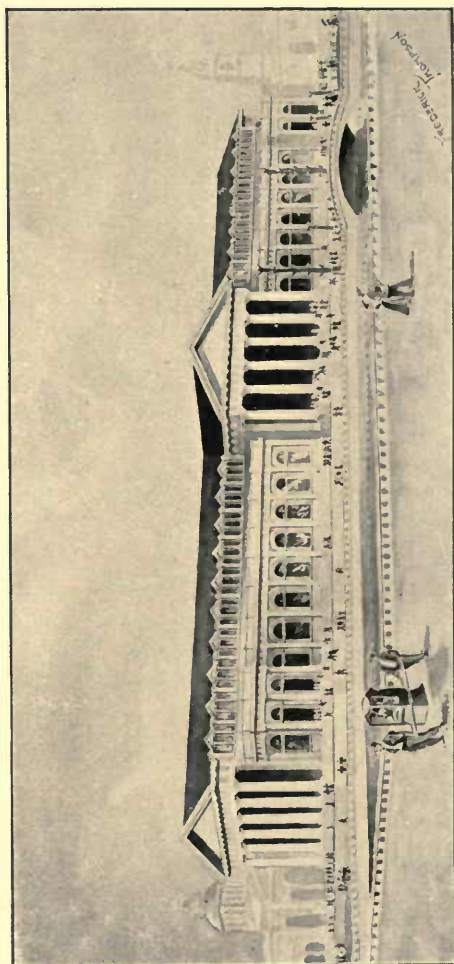
FREDERICK THOMPSON, DEL.

TRANSPORTATION BUILDING.



PHOTO BY OTTO GIER.

A. W. WILLS,
COMMISSIONER GENERAL TENNESSEE CENTENNIAL EXPOSITION.



FREDERICK THOMPSON, DEL.

MACHINERY BUILDING.

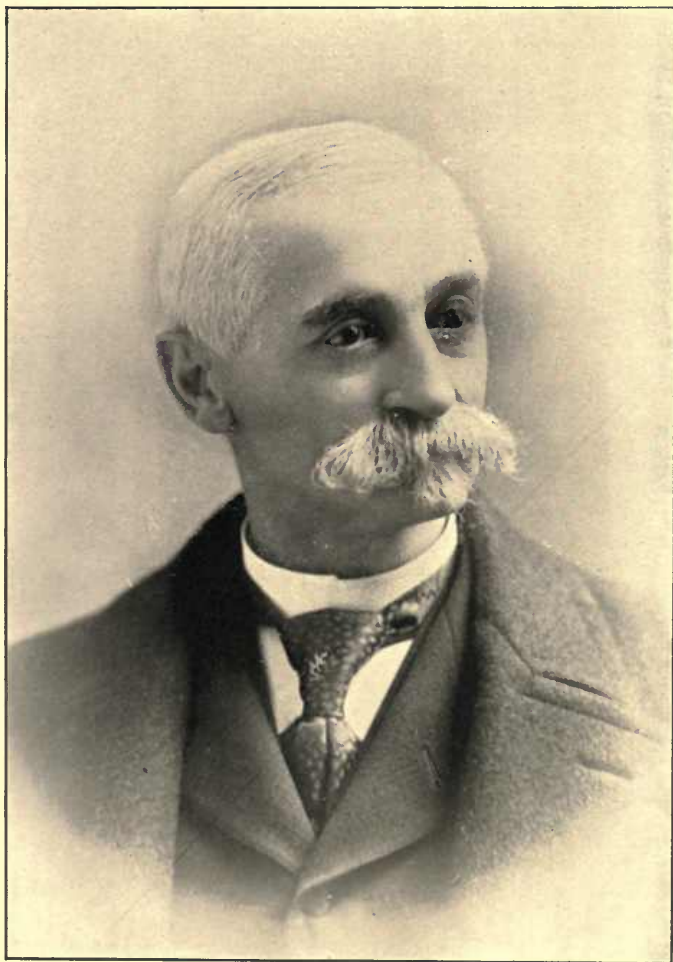
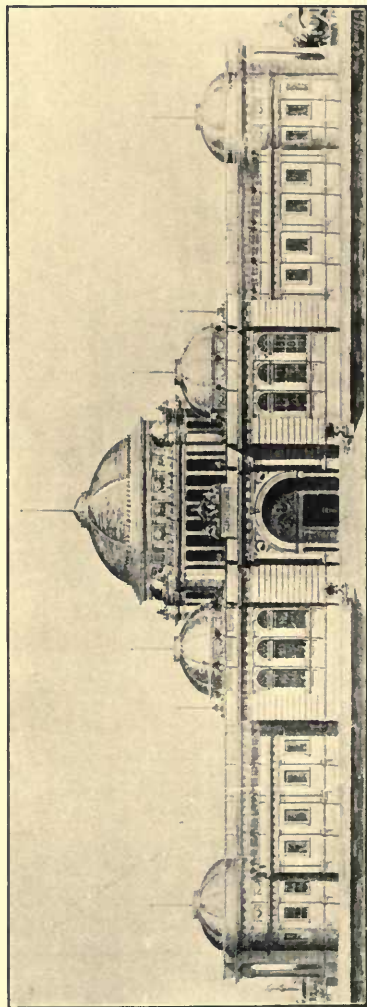


PHOTO BY OTTO GIER.

W. F. FOSTER.

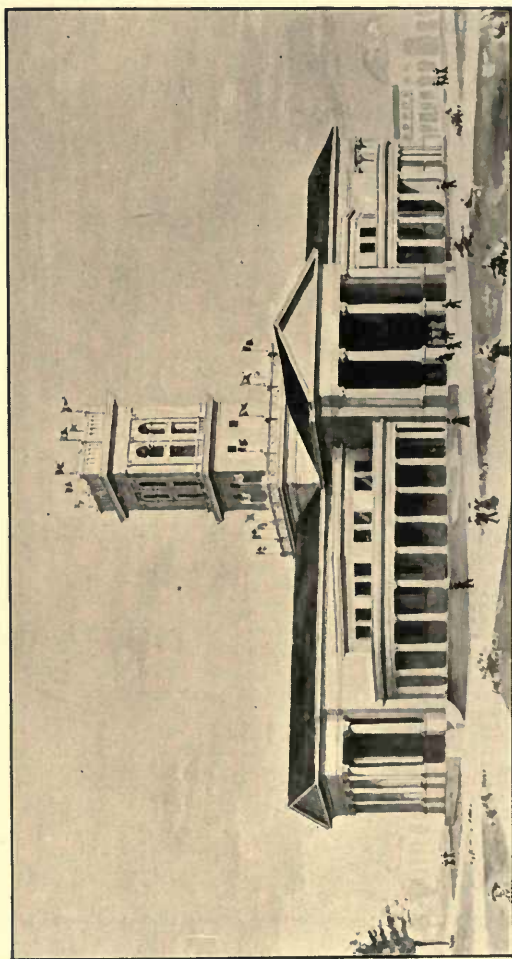


JUL. G. ZWICKER, ARCHITECT.

AGRICULTURAL BUILDING.

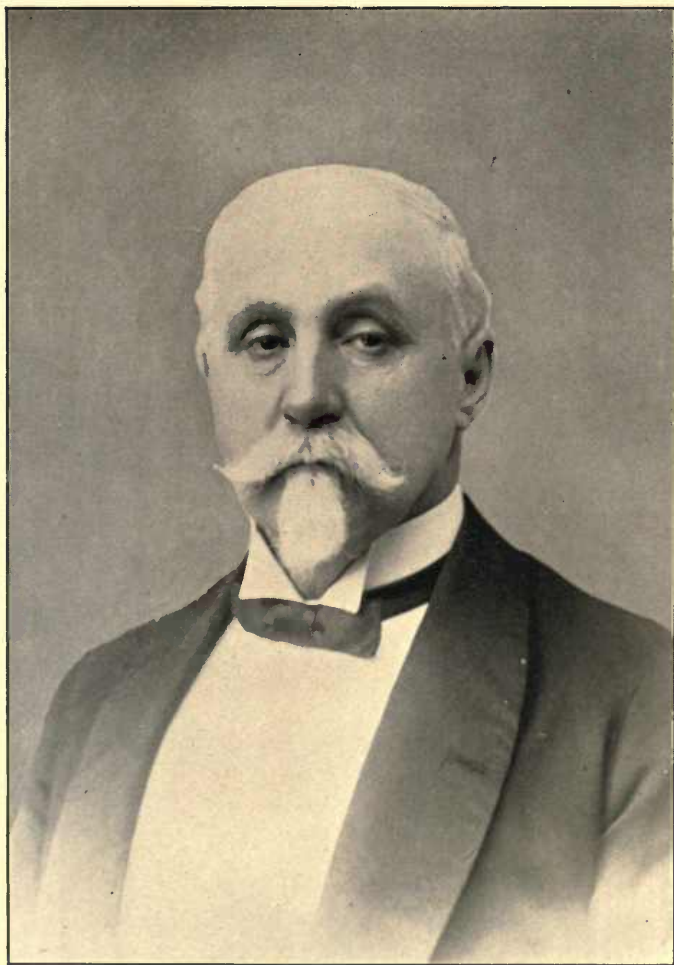


AUGUSTUS H. ROBINSON,
VICE PRESIDENT UNION BANK AND TRUST COMPANY.

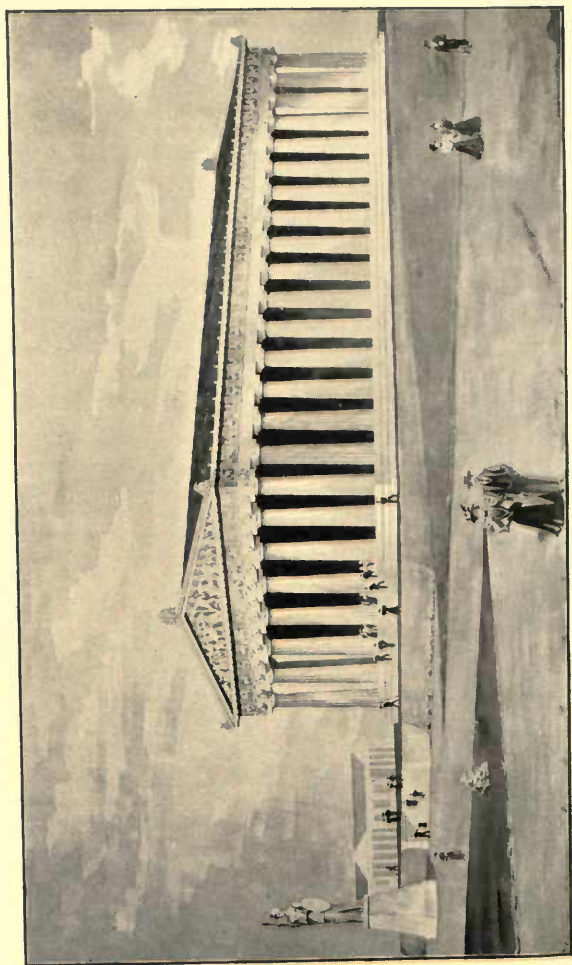


FREDERICK THOMPSON, DEL.

AUDITORIUM.



B. F. WILSON.



FREDERICK THOMPSON, DEL.

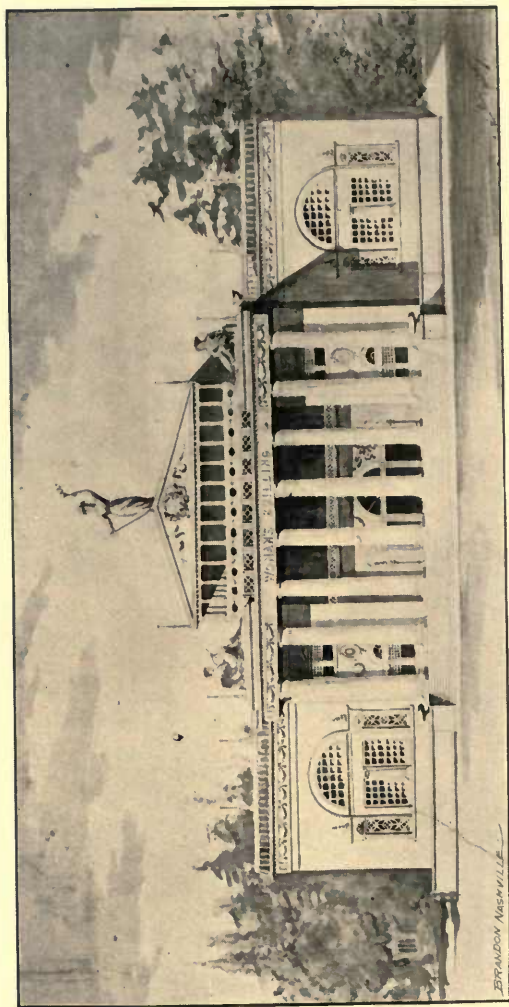
FINE ARTS BUILDING. (THE PARTHENON.)



PHOTO BY OTTO GIER.

THEODORE COOLEY.

CHIEF DEPARTMENT OF FINE ARTS.



SARA WARD-CONLEY, ARTIST, ARCHITECT.

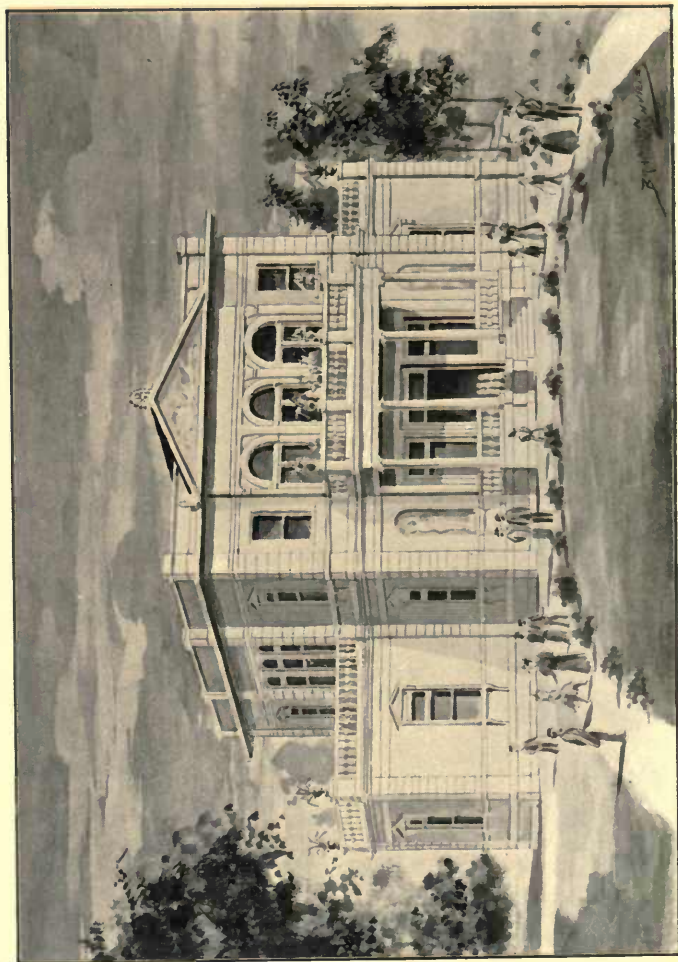
WOMAN'S BUILDING.



PHOTO BY OTTO GIERS.

SARA WARD-CONLEY,

ARTIST.



CHILDREN'S BUILDING.



PHOTO BY OTTO GIER.

W. T. DAVIS.

CHIEF CHILDREN'S DEPARTMENT. TENNESSEE CENTENNIAL.

Univ Calif - Digitized by Microsoft ®



FREDERICK THOMPSON, DEL.

COMMERCE BUILDING.

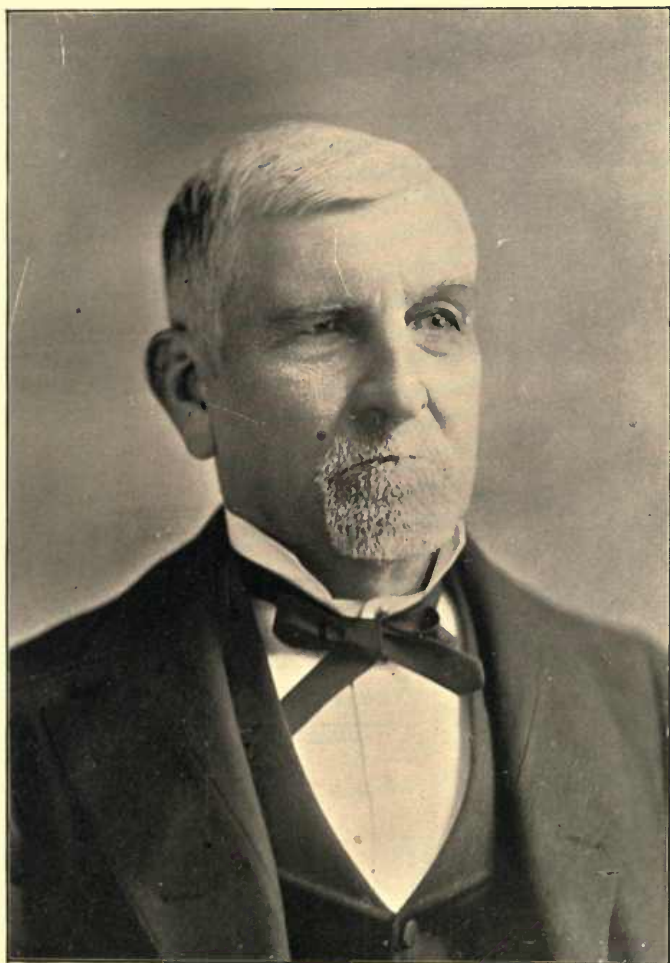


PHOTO BY OTTO GIERS.

J. B. KILLEBREW, A. M., PH. D.,

COMMISSIONER OF AGRICULTURE FOR THE STATE OF TENNESSEE FROM
1871 TO 1881, AND SPECIAL EXPERT OF THE TENTH
CENSUS, AND ONE OF THE WRITERS OF
THE STANDARD DICTIONARY.

Univ Calif - Digitized by Microsoft ®



PHOTO BY CALVERT BROS. & TAYLOR.
THOS. D. FITE.

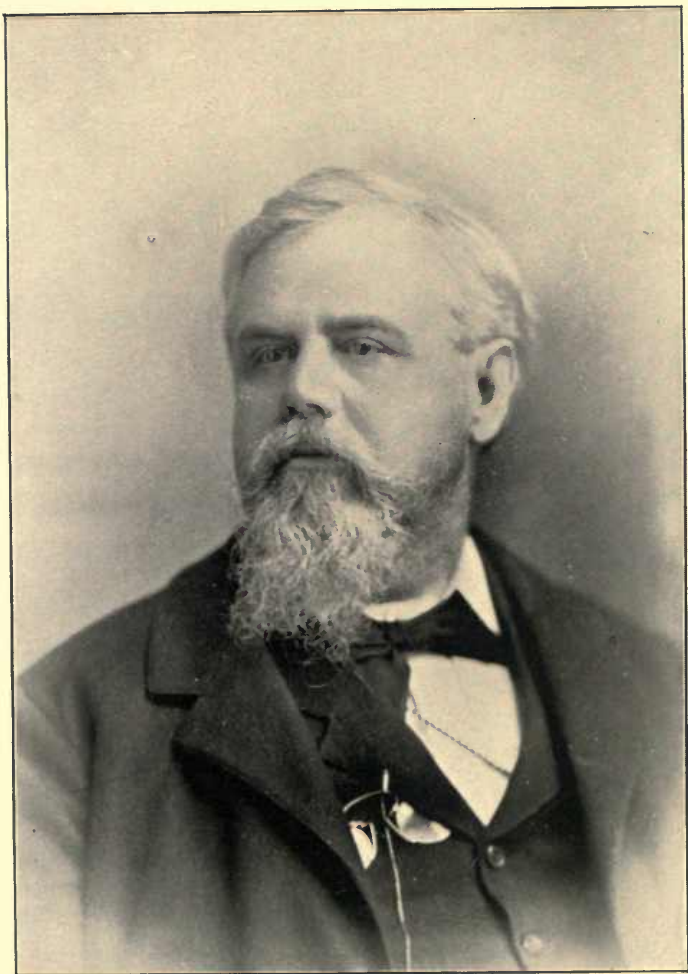


PHOTO BY OTTO GIERS.

JOHN D. ANDERSON.

Univ Calif - Digitized by Microsoft ®



PHOTO BY CALVERT BROS. & TAYLOR.

T. F. P. ALLISON,

COMMISSIONER OF AGRICULTURE, STATE OF TENNESSEE.

Univ Calif - Digitized by Microsoft ®



PHOTO BY OTTO GIERS.

G. P. THRUSTON,
PRESIDENT STATE INSURANCE COMPANY.

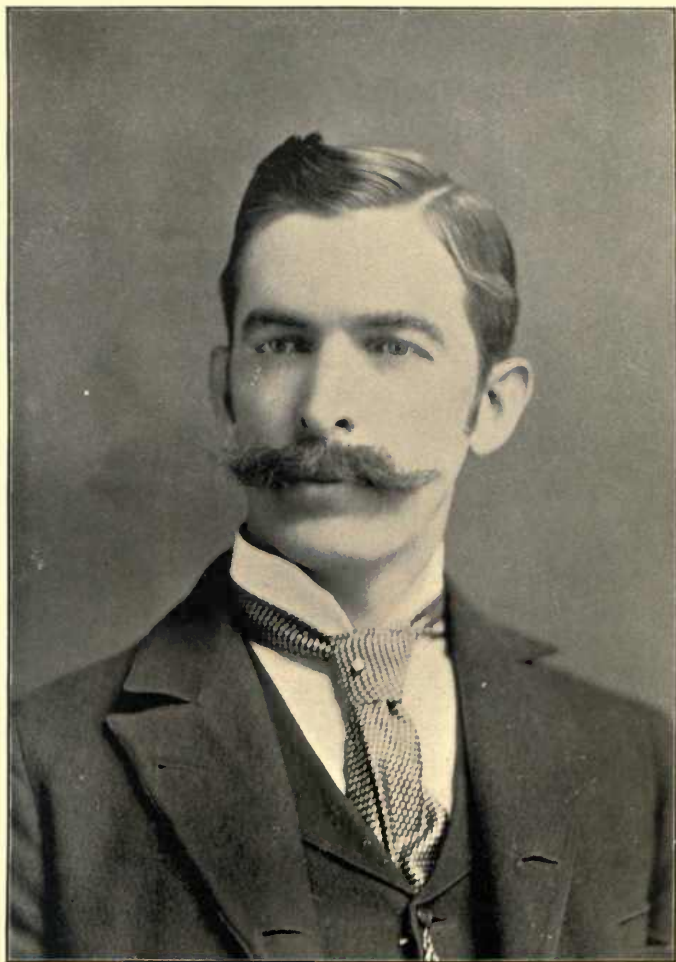
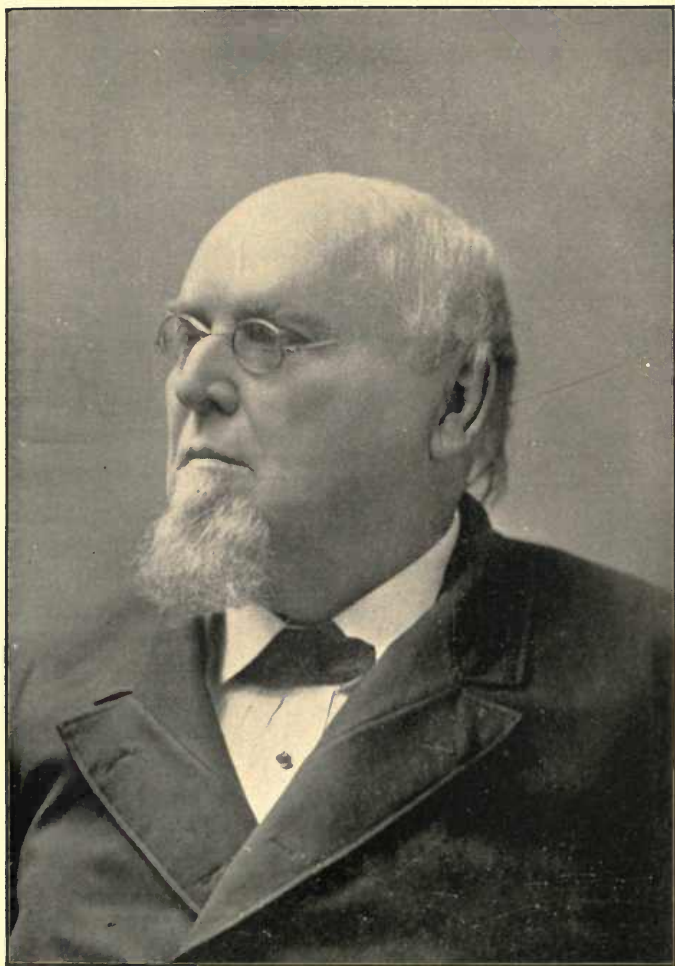


PHOTO BY OTTO GIER.

F. T. CUMMINS,

PRESIDENT SOUTHERN SODA WORKS.

Univ Calif - Digitized by Microsoft ®



THOS. A. ATCHISON, M. D.

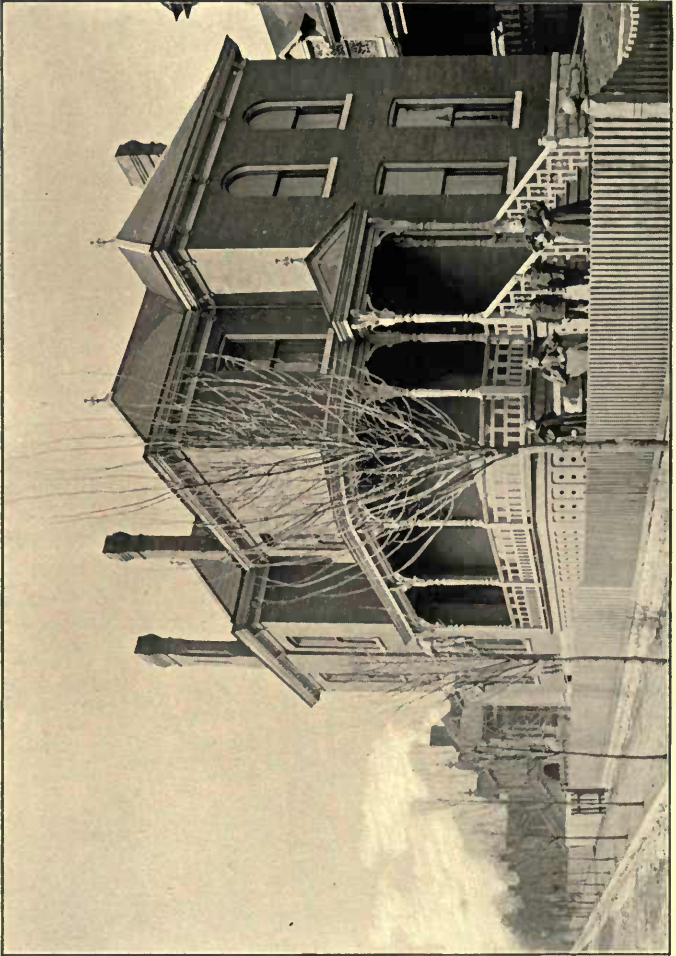


PHOTO BY OTTO GIERS.

RESIDENCE OF JOHN A. WARD.



PHOTO BY OTTO GIER.

JOHN A. WARD.

GENERAL AGENT KENTUCKY WAGON MANUFACTURING COMPANY.

DIRECTOR TENNESSEE CENTENNIAL.

Univ Calif - Digitized by Microsoft ®

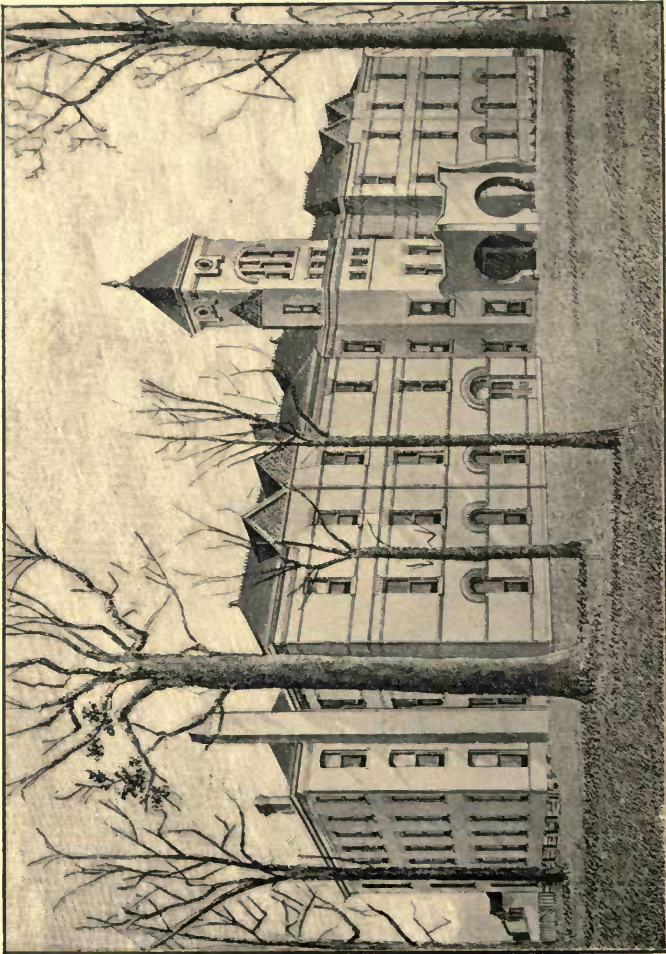


PHOTO BY CALVERT BROS. & TAYLOR.

TENNESSEE INDUSTRIAL SCHOOL.



PHOTO BY CALVERT BROS. & TAYLOR.

W. C. KILVINGTON,

SUPERINTENDENT TENNESSEE INDUSTRIAL SCHOOL.

Univ Calif - Digitized by Microsoft®

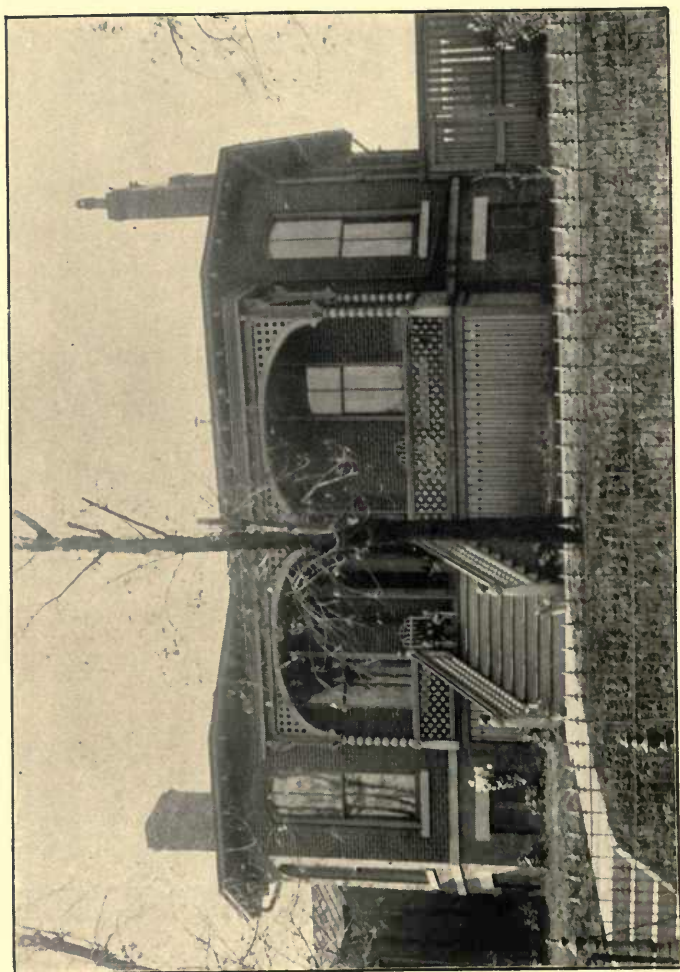


PHOTO BY OTTO GIERS.

RESIDENCE OF MAYOR WM. M. MCCARTHY.



PHOTO BY OTTO GIER.

WM. M. McCARTHY.

Univ Calif - Digitized by Microsoft®

MAYOR OF THE CITY OF NASHVILLE



PHOTO BY OTTO GIERS.

FACTORY OF THE HILL TRUNK COMPANY.
Univ Calif - Digitized by Microsoft®



PHOTO BY OTTO GIERS.

J. L. HILL,

Univ Calif - Digitized by Microsoft®

MANAGER HILL TRUNK COMPANY

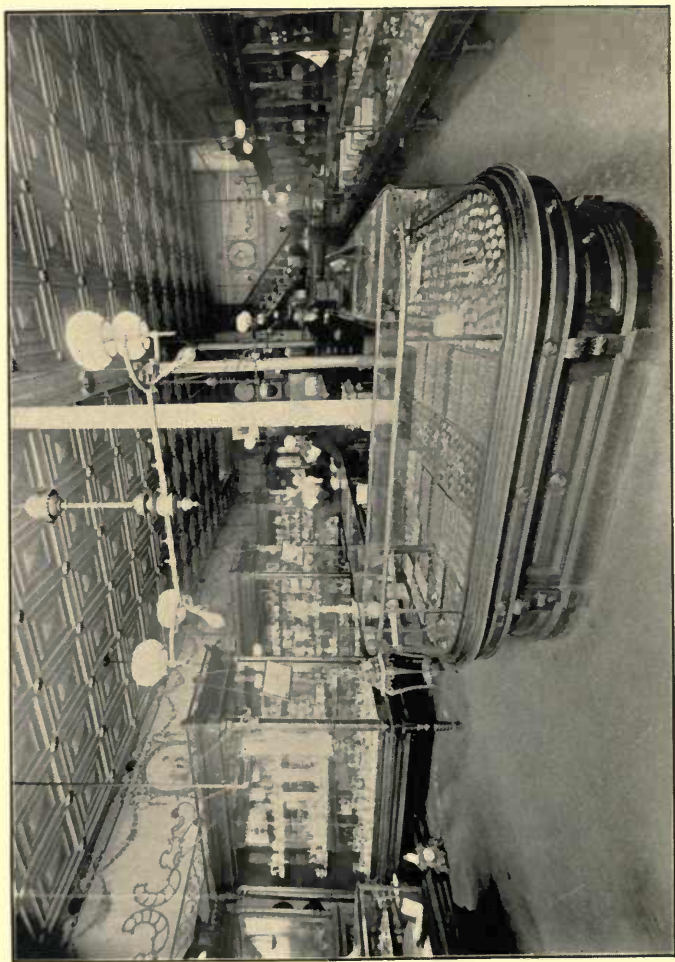


PHOTO BY OTTO GIER.

SALESROOM B. H. STIEF JEWELRY COMPANY.



PHOTO BY OTTO GIERS.

JAMES B. CARR,

MANAGER B. H. STIFF JEWELRY COMPANY.

Univ. Calif. Digitized by Microsoft®



PHOTO BY OTTO GIER.

INTERIOR OF MAX BLOOMSTEIN'S PHARMACY.



PHOTO BY OTTO GIERS.

MAX BLOOMSTEIN,
PHARMACIST AND CHEMIST.



PHOTO BY OTTO GIERS.

J. K. HEMPHILL,
PRESIDENT POST B, TRAVELERS' PROTECTIVE ASSOCIATION
OF AMERICA.

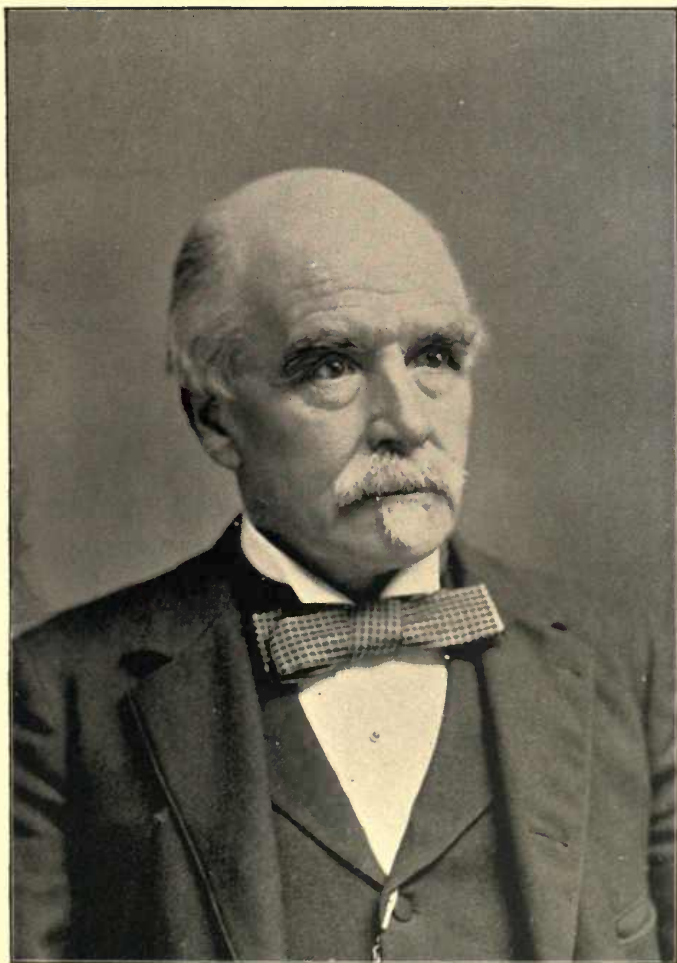


PHOTO BY CALVERT BROS. & TAYLOR.

JAMES GEDDES,

SUPERINTENDENT LOUISVILLE & NASHVILLE RAILROAD.

Univ Calif - Digitized by Microsoft ®



PHOTO BY OTTO GIERS.

GEO. C. PORTER,
PRESIDENT STATE BOARD OF ASSESSORS AND EQUALIZERS.



PHOTO BY OTTO GIERS.

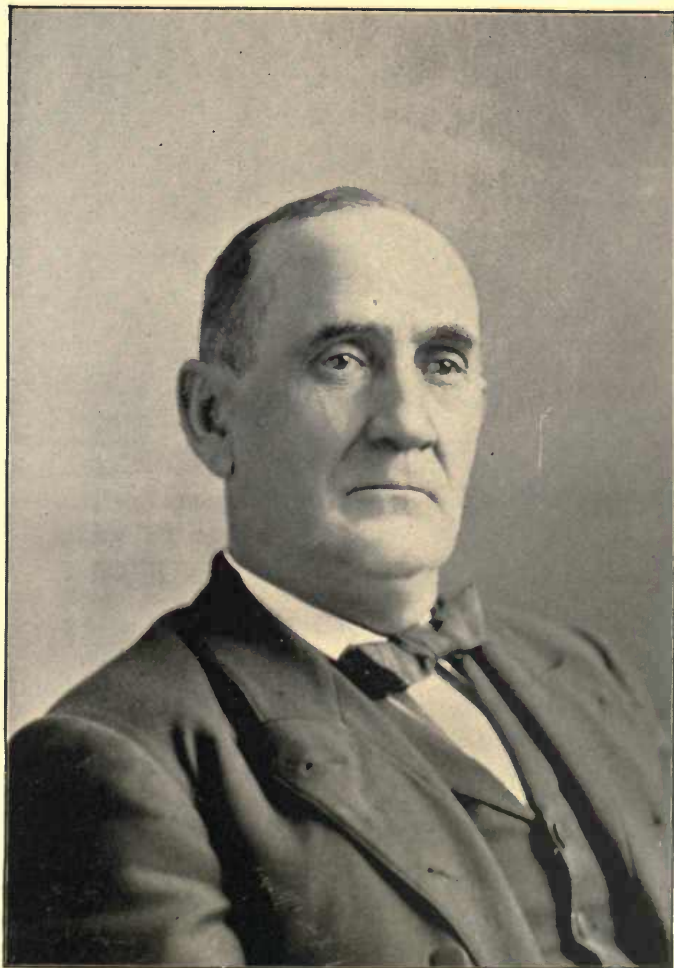
DUNCAN EVE, M. D.

Univ Calif - Digitized by Microsoft ®



PHOTO BY OTTO GIERS.

JUL. G. ZWICKER,
ARCHITECT.



JNO. C. FERRIS,

COUNTY JUDGE DAVIDSON COUNTY.

Univ Calif - Digitized by Microsoft ®

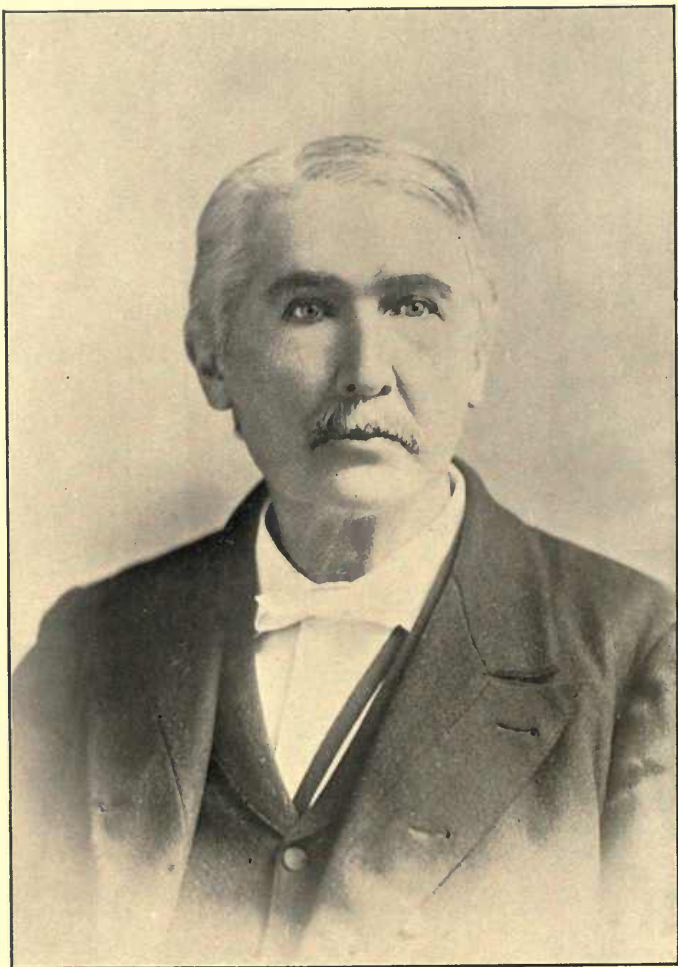


PHOTO BY OTTO GIERS.

R. A. YOUNG.

REGENT BELMONT COLLEGE.

Univ Calif - Digitized by Microsoft ®

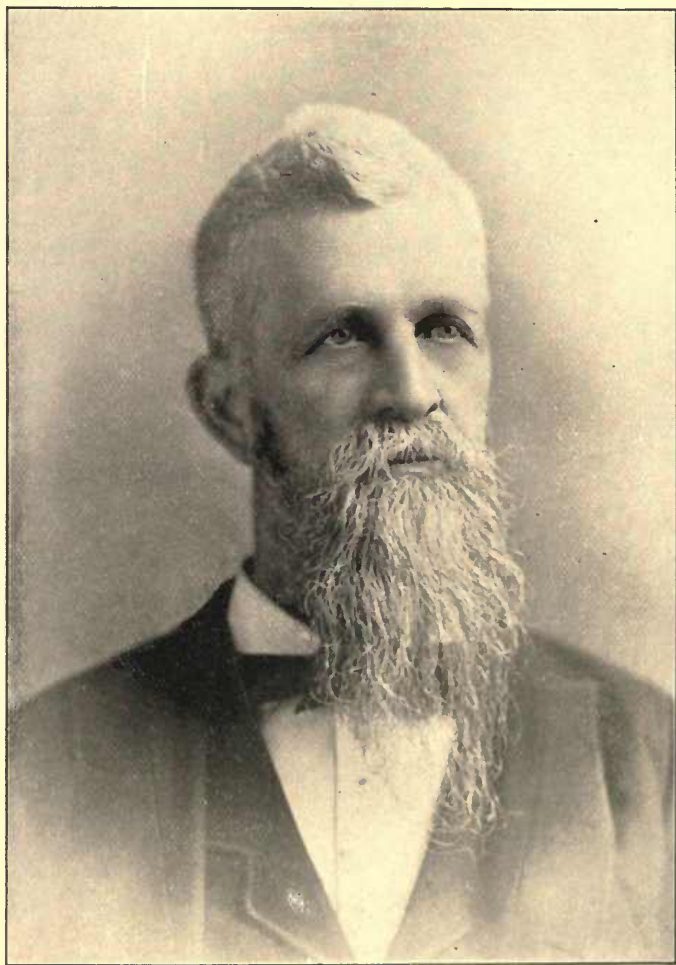


PHOTO BY OTTO GIER.

T. I. WEBB.

OF SPURLOCK-NEAL COMPANY, WHOLESALE DRUGGISTS.

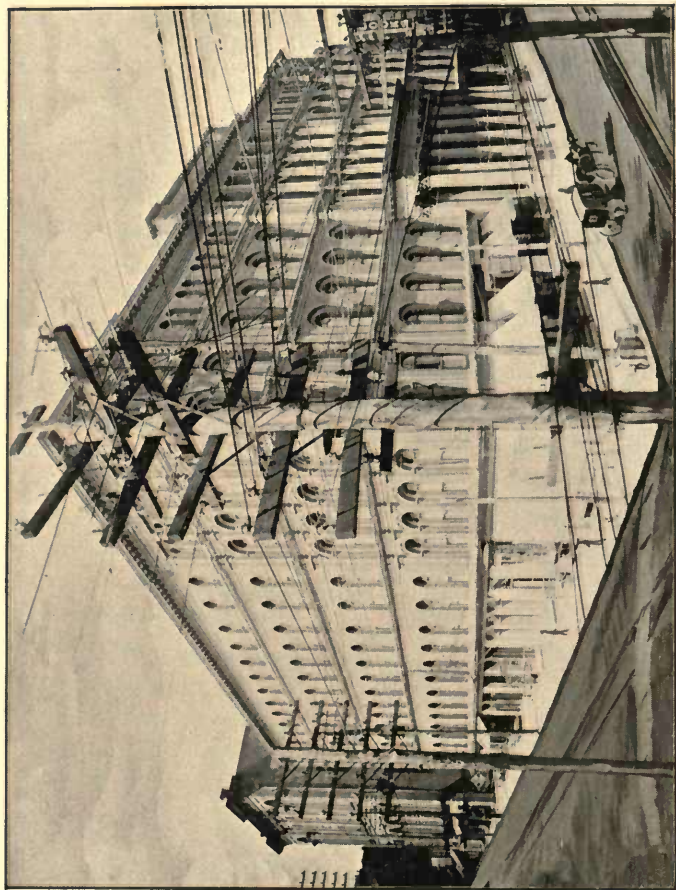


PHOTO BY OTTO GIER.

MAXWELL HOUSE, W. K. BLACK, MANAGER.



PHOTO BY OTTO GIER.

U. S. CUSTOM HOUSE.

Univ Calif - Digitized by Microsoft ®

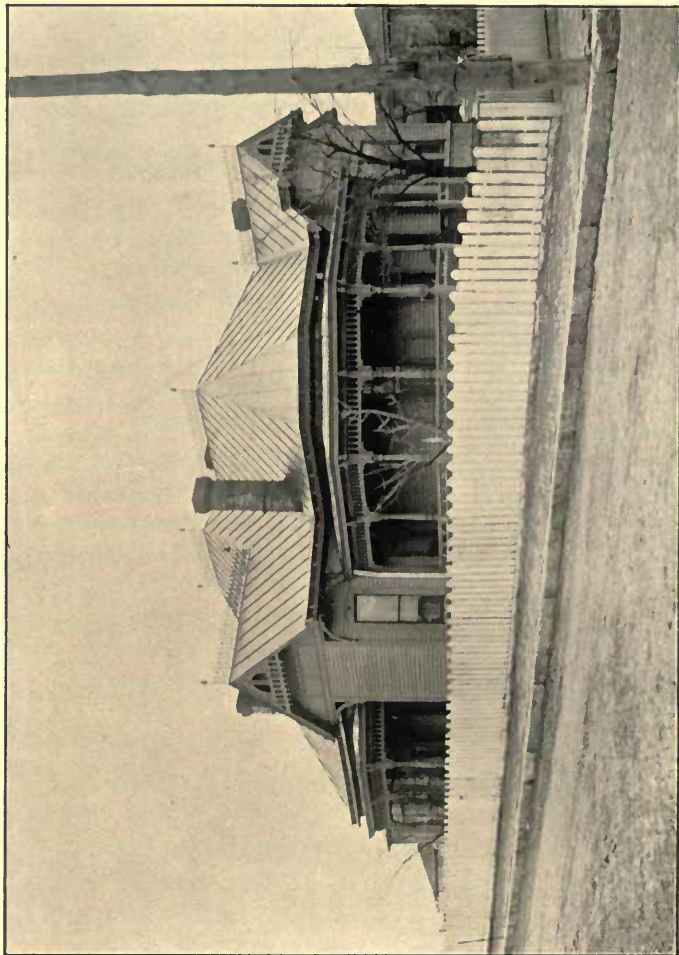


PHOTO BY OTTO GIERS.

RESIDENCE OF POSTMASTER H. J. CHENEY.



PHOTO BY OTTO GIER.

H. J. CHENEY.

POSTMASTER, NASHVILLE.

Univ Calif - Digitized by Microsoft®

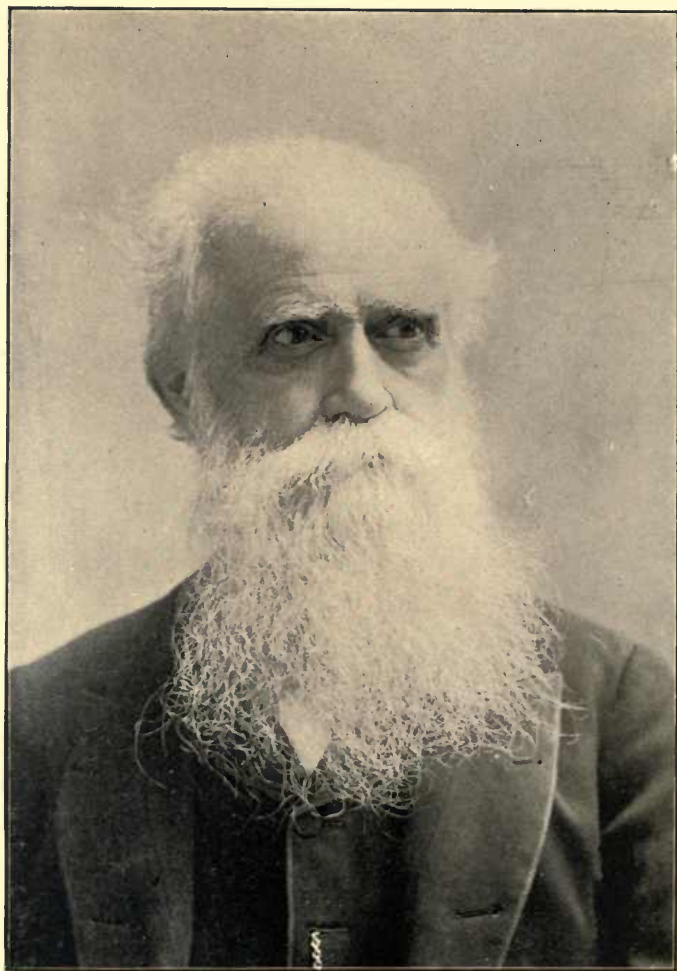


PHOTO BY CALVERT BROS. & TAYLOR.

THOMAS L. MADDIN, M. D.

Univ Calif - Digitized by Microsoft ®

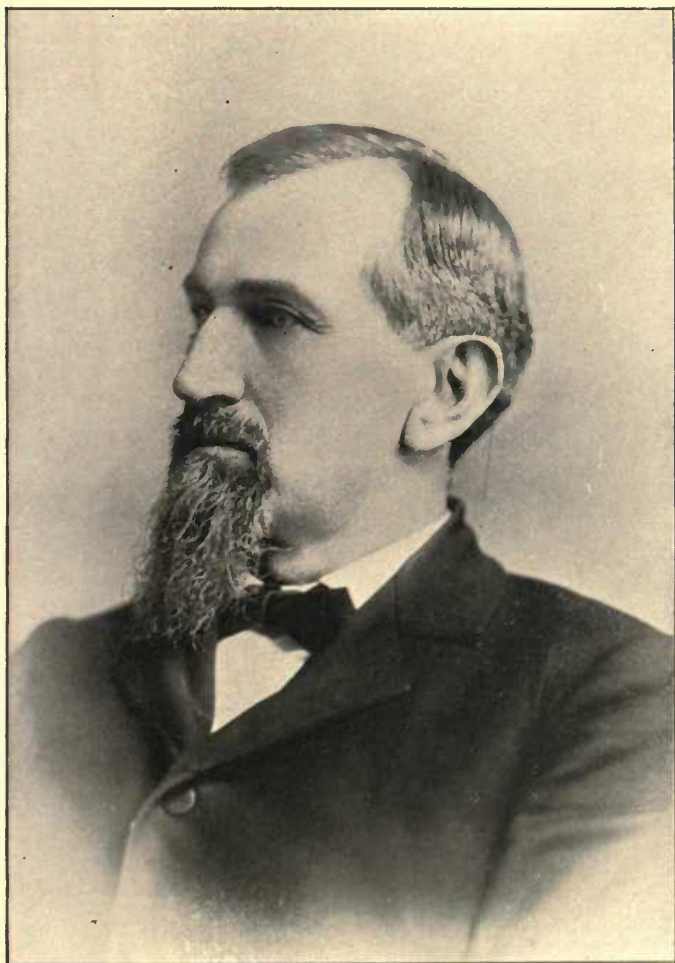


PHOTO BY OTTO GIERS.

S. F. WILSON.

JUDGE COURT OF CHANCERY APPEALS.

Univ Calif - Digitized by Microsoft®



PHOTO BY OTTO GIERS.

W. B. WALTON, JR.

NASHVILLE'S HATTER. SOLE AGENT DUNLAP'S HATS
AND MILLER'S HATS.

Univ Calif - Digitized by Microsoft ®



PHOTO BY OTTO GIERS.

BEN LINDAUER,

OF HERMAN BROS., LINDAUER & CO., WHOLESALE DRY GOODS AND
BOOTS AND SHOES.

Univ Calif - Digitized by Microsoft ®

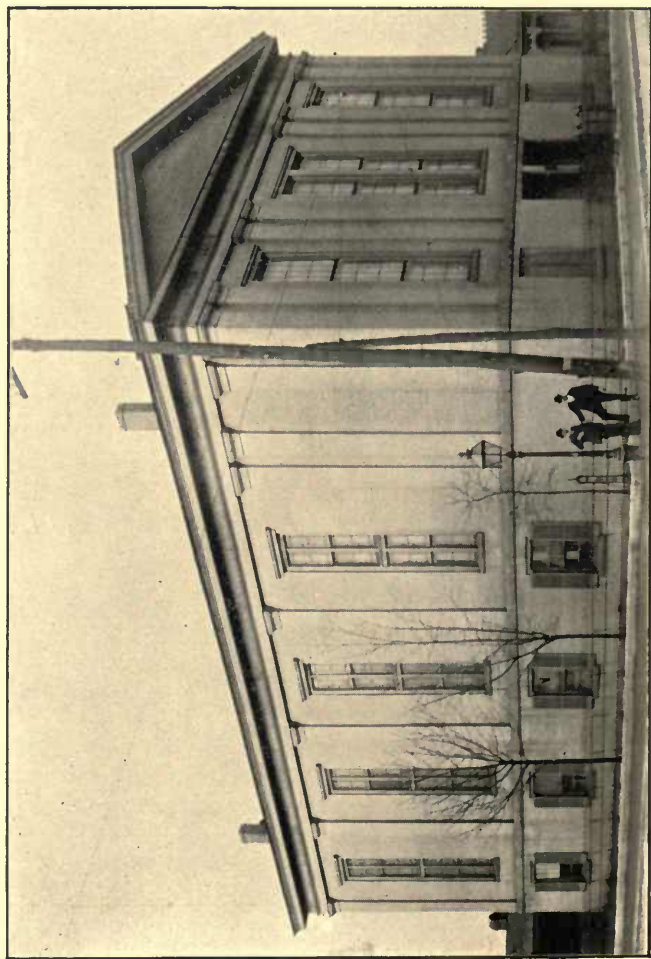


PHOTO BY OTTO GIERS.

CENTRAL BAPTIST CHURCH.



PHOTO BY OTTO GIERS.

REV. GEO. A. LOFTON,

PASTOR CENTRAL BAPTIST CHURCH.

Univ Calif - Digitized by Microsoft ®

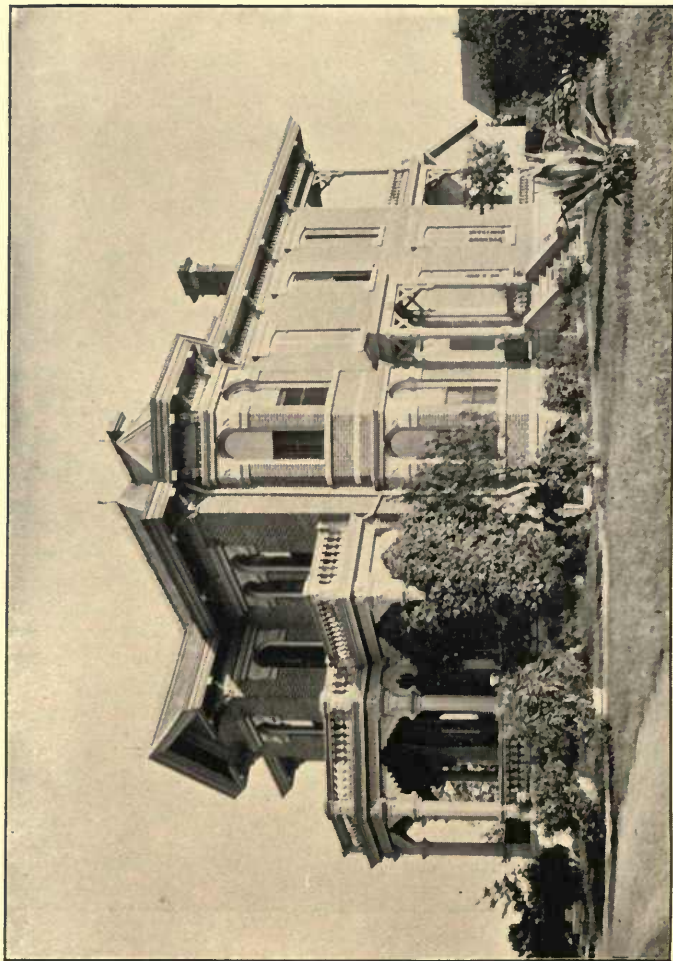


PHOTO BY OTTO GIER.
RESIDENCE OF JUDGE JOHN WOODARD AND JOHN H. WOODARD, M. D.

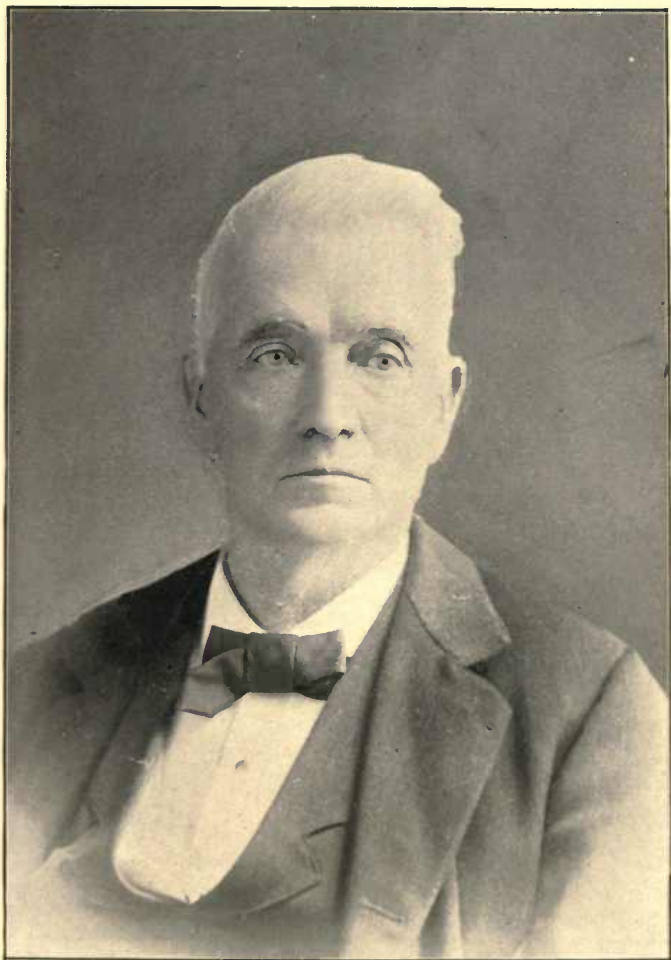


PHOTO BY OTTO GIER.

JUDGE JOHN WOODARD.

Univ Calif - Digitized by Microsoft ®



PHOTO BY OTTO GIERS.

A. J. HARRIS,

CIRCUIT COURT CLERK DAVIDSON COUNTY.

Univ Calif - Digitized by Microsoft ®



PHOTO BY OTTO GIERS.

JOHN H. WOODARD, M. D.

Univ Calif - Digitized by Microsoft ®



PHOTO BY CALVERT BROS. & TAYLOR.
RESIDENCE OF R. L. WEAKLEY.

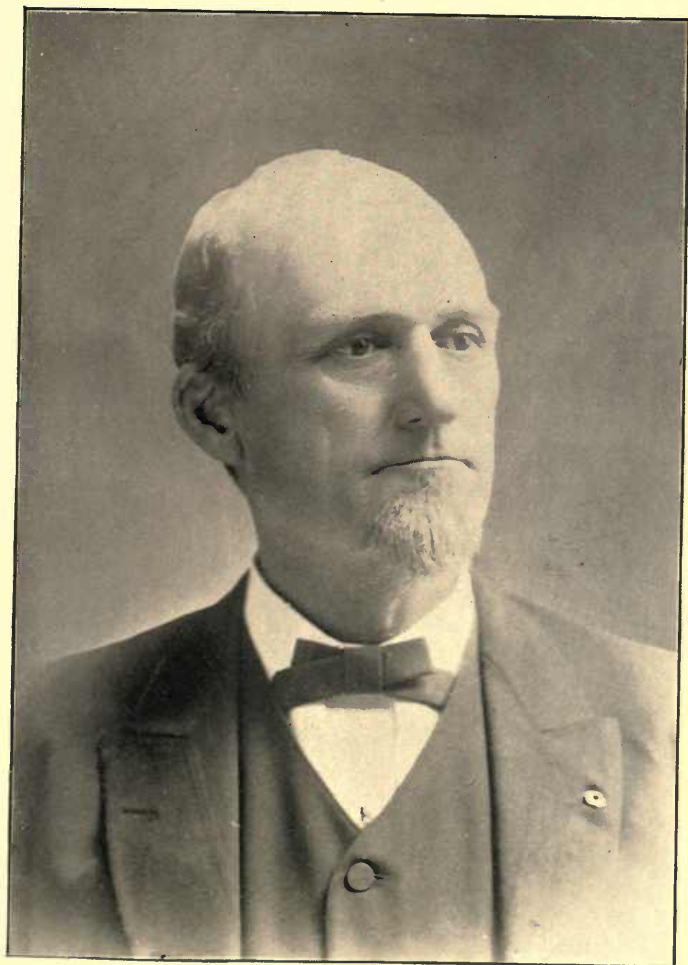


PHOTO BY CALVERT BROS. & TAYLOR.

R. L. WEAKLEY.

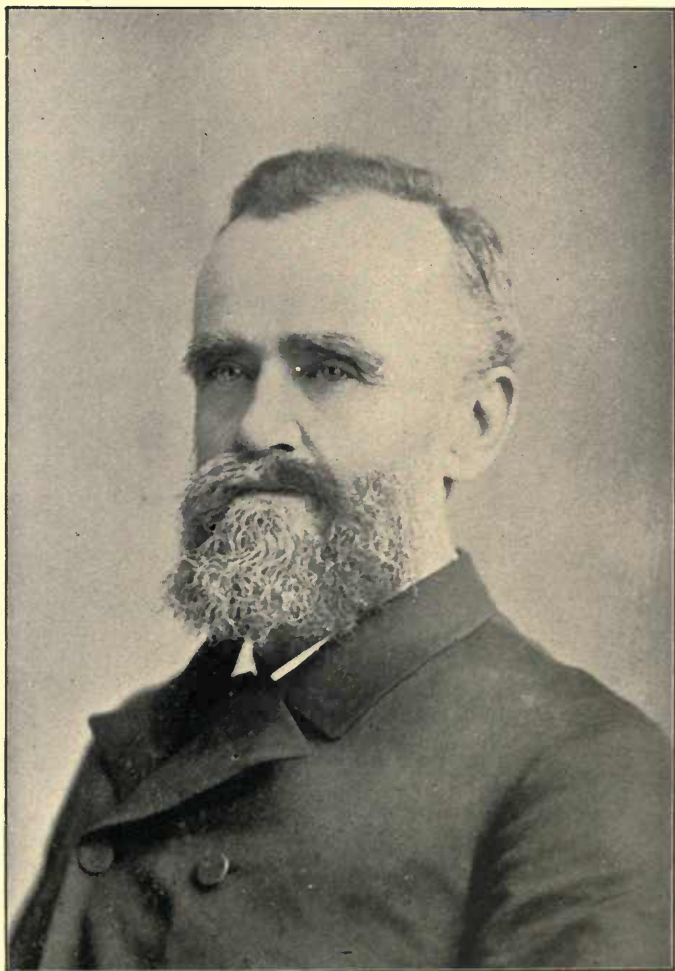
Univ Calif - Digitized by Microsoft ®



PHOTO BY OTTO GIER.

HENRY J. DUDLEY,
ARCHITECT JACKSON BUILDING.

Univ Calif - Digitized by Microsoft ®



W. L. NICHOL, M. D.
Univ Calif - Digitized by Microsoft®

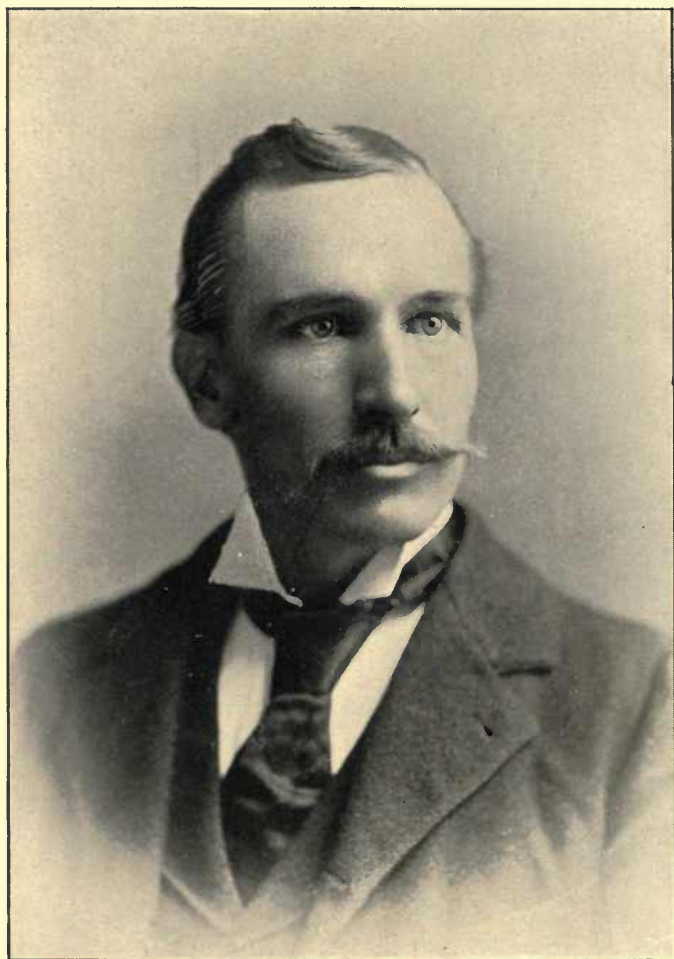


PHOTO BY OTTO GIER.

JAMES A. YOWELL,

GENERAL AGENT UNION CENTRAL LIFE INSURANCE COMPANY.

Univ Calif - Digitized by Microsoft ®

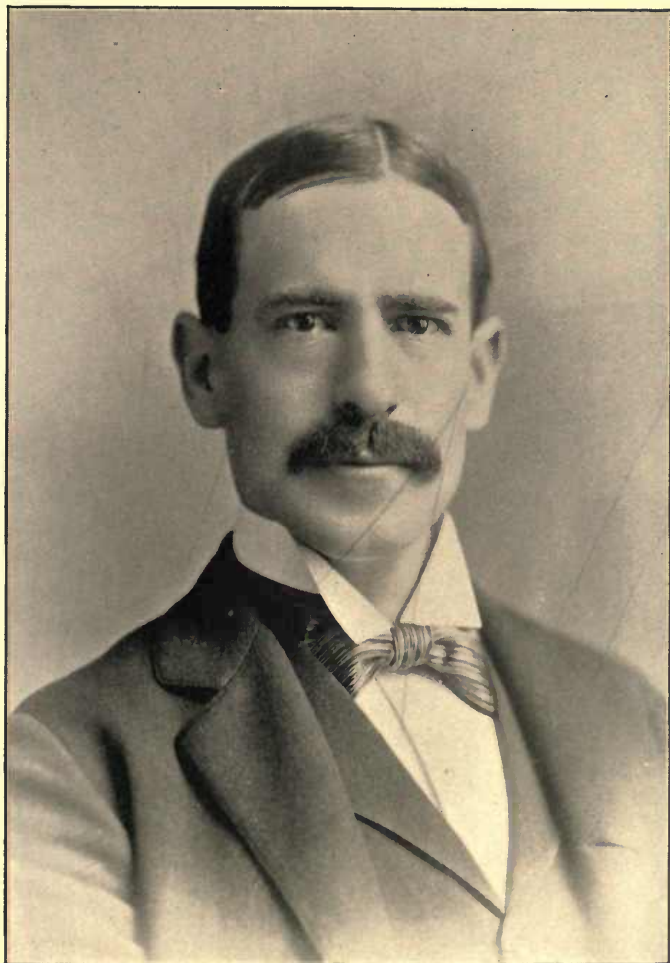


PHOTO BY OTTO GIER.

JAMES TAYLOR.

GENERAL INSURANCE AGENT.

Univ Calif - Digitized by Microsoft ®



DR. WM. WHITE,
OF WHITE, DUDLEY & Co., BANKERS.



PHOTO BY CALVERT BROS. & TAYLOR.

FRANK B. FOGG.

GENERAL MANAGER DUCK RIVER PHOSPHATE COMPANY.

Univ Calif - Digitized by Microsoft®

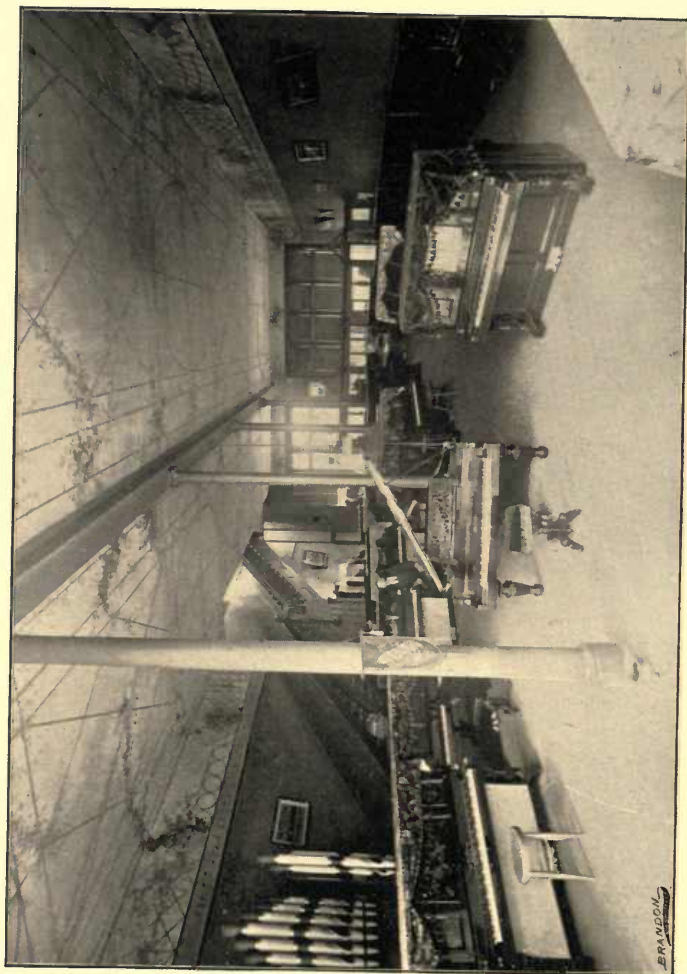


PHOTO BY OTTO GIER.

WAREROOMS JESSE FRENCH PIANO AND ORGAN COMPANY.

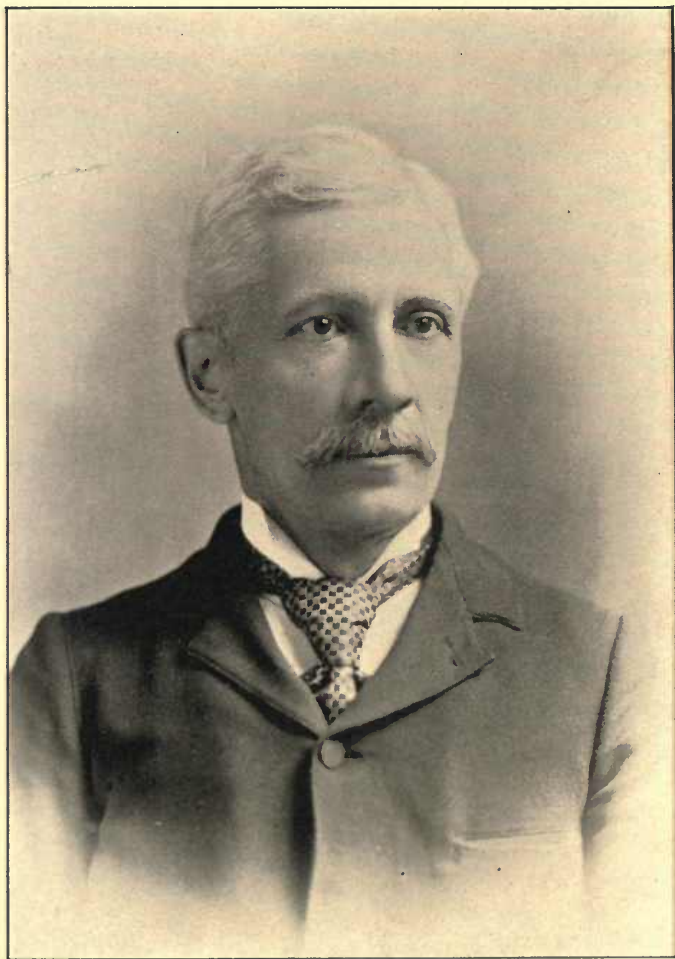


PHOTO BY OTTO GIER.

C. A. LITTERER,

OF FIRM OF C. A. LITTERER & CO., DEALERS IN FARM IMPLEMENTS.

Univ Calif - Digitized by Microsoft®

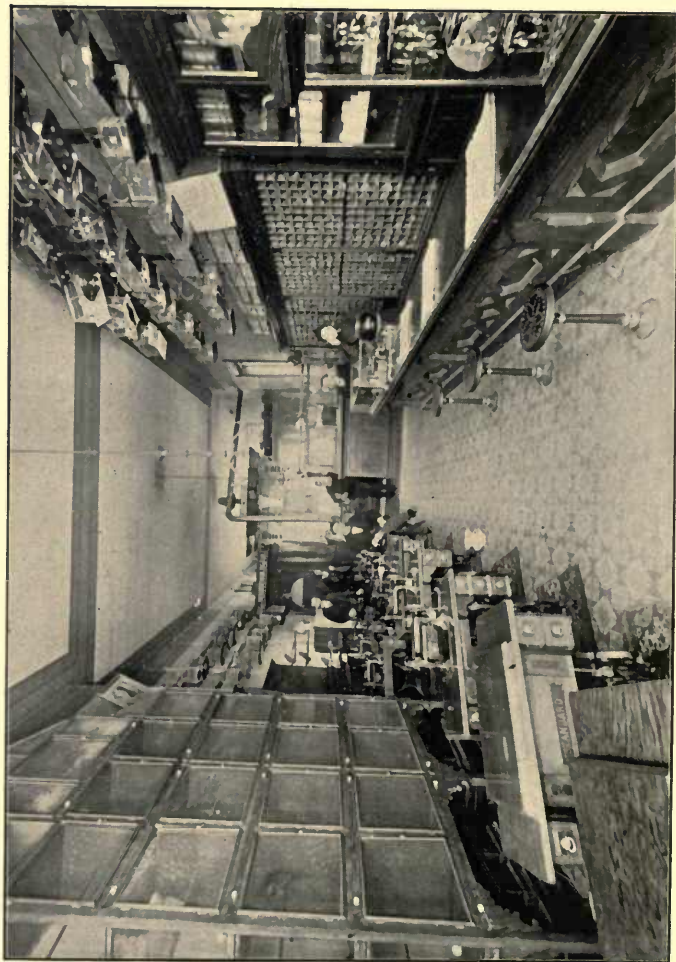


PHOTO BY OTTO GIER.
WAREROOM OF J. W. CAMP, SEWING MACHINES AND BIRDS.

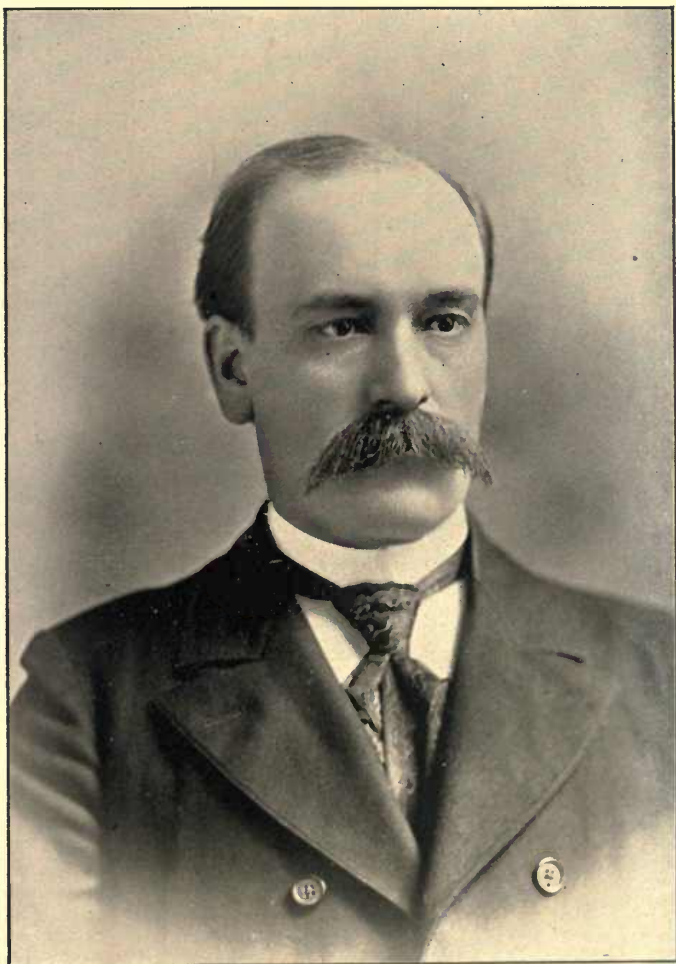


PHOTO BY OTTO GIER.

P. A. SHELTON,

COUNTY COURT CLERK DAVIDSON COUNTY.

Univ Calif - Digitized by Microsoft®



PHOTO BY OTTO GIERS

J. B. ARMSTRONG,

REGISTER DAVIDSON COUNTY.

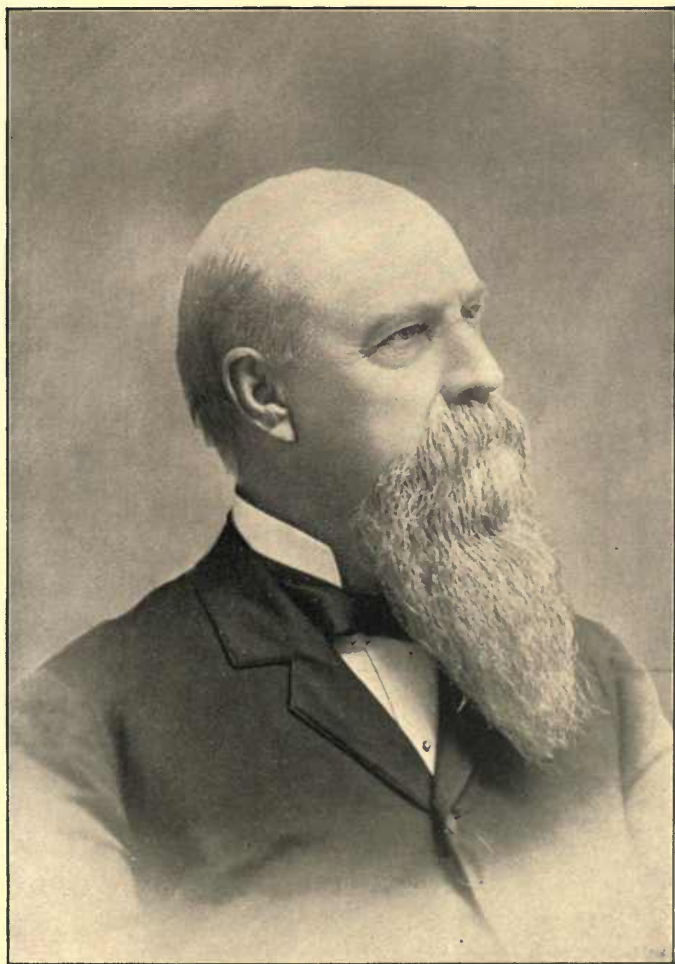


PHOTO BY CALVERT BROS. & TAYLOR.

W. A. ATCHISON, M. D.

Univ Calif - Digitized by Microsoft®



PHOTO BY CALVERT BROS. & TAYLOR.

D. C. KELLEY,

REV. AND D. D., NEE COL. CAVALRY, C. S. A.

Univ Calif - Digitized by Microsoft ®



PHOTO BY CALVERT BROS. & TAYLOR.

JNO. W. MORTON,

ASSISTANT COMMISSIONER OF AGRICULTURE.

Univ Calif - Digitized by Microsoft®



PHOTO BY OTTO GIER.

W. D. COVINGTON,
ATTORNEY FOR DAVIDSON COUNTY.



PHOTO BY OTTO GIER.

J. L. ATKINS.

THE PIONEER HORSE SHOER.

Univ Calif - Digitized by microsoft®

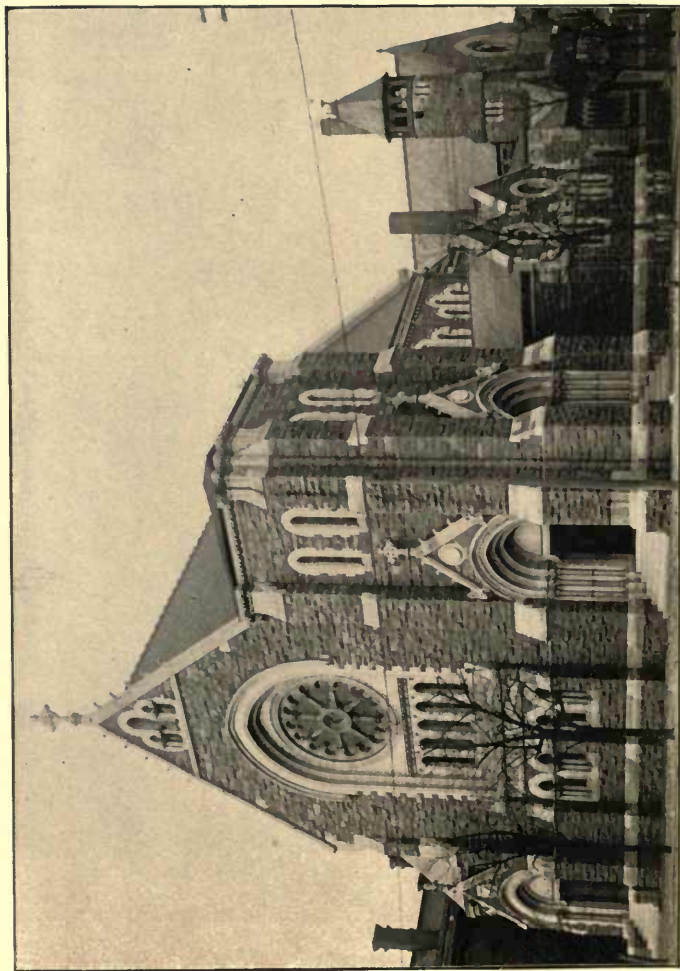


PHOTO BY OTTO GIER.

CHRIST CHURCH (EPISCOPAL.)



PHOTO BY OTTO GIERS.

REV. JAMES R. WINCHESTER, D. D.

Univ Calif. Digitized by Microsoft®

RECTOR OF CHRIST CHURCH.



PHOTO BY OTTO GIER.

W. T. LINCK,

PROPRIETOR LINCK'S HOTEL.

Univ Calif - Digitized by Microsoft ®

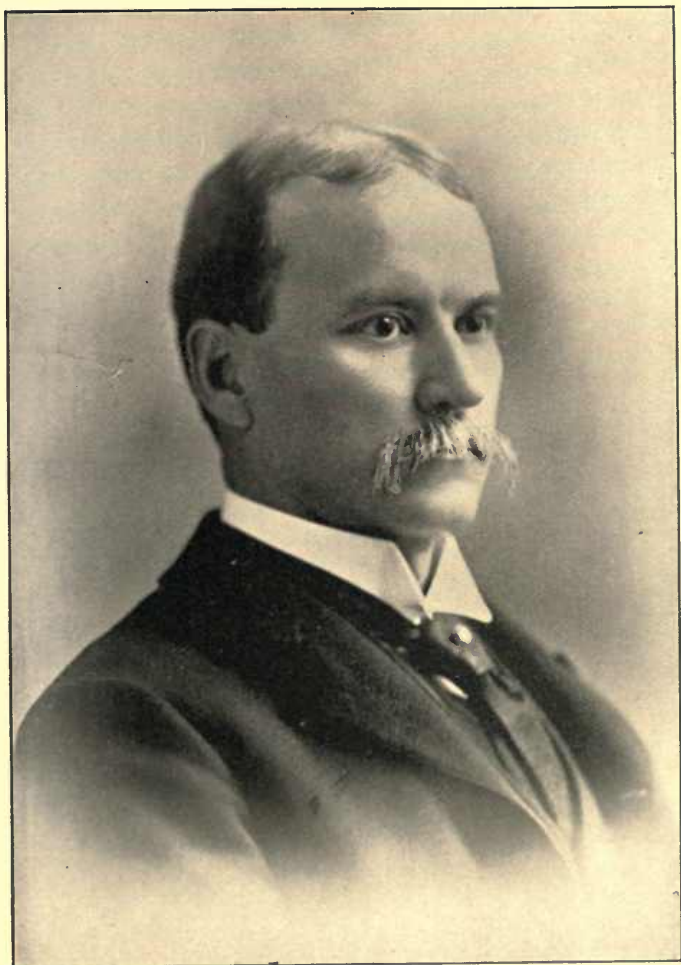


PHOTO BY OTTO GIERS.

C. H. SANDERS,

GENERAL AGENT LOUISVILLE & NASHVILLE R. R.

Univ Calif - Digitized by Microsoft®



PHOTO BY OTTO GIERS.

ALEXANDER FALL.

PRESIDENT NASHVILLE SHORTHAND INSTITUTE.

Univ Calif - Digitized by Microsoft ®



PHOTO BY OTTO GIERS.

S. G. GILBREATH,

STATE SUPERINTENDENT PUBLIC INSTRUCTION. ®

Univ. Calif.

Digitized by Microsoft

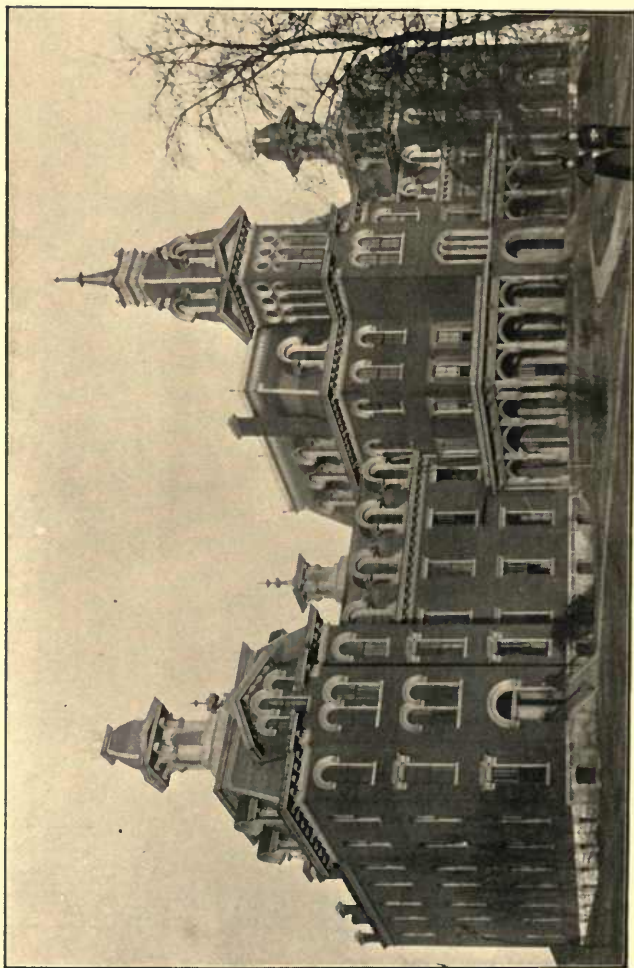


PHOTO BY OTTO GIER.

TENNESSEE SCHOOL FOR THE BLIND.

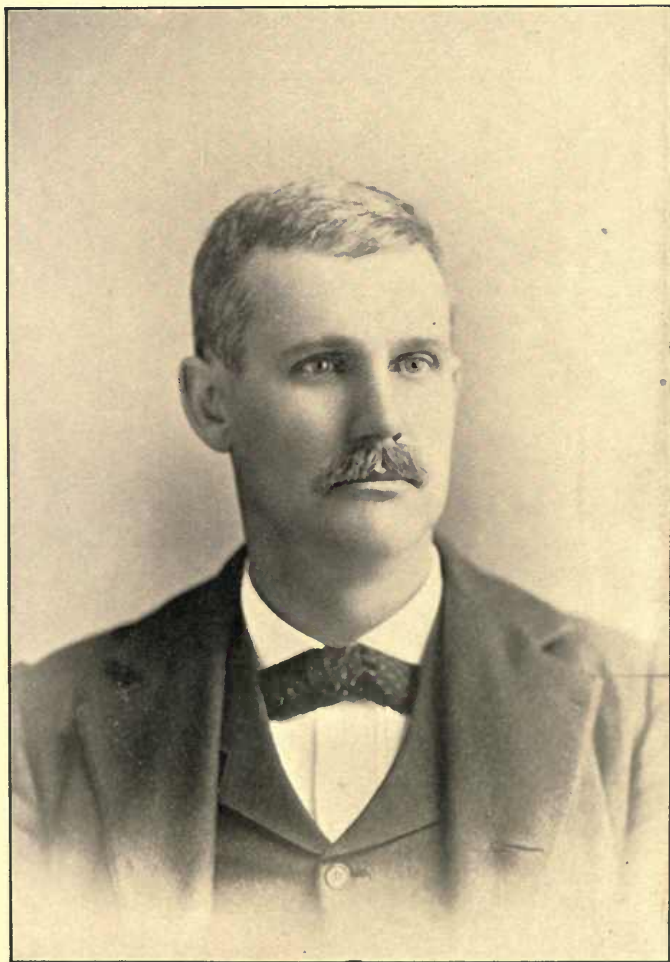


PHOTO BY OTTO GIER.

DAVID LIPSCOMB, JR.

SUPERINTENDENT TENNESSEE SCHOOL FOR THE BLIND.

Univ Calif - Digitized by Microsoft®



PHOTO BY OTTO GIER.

CHAS. S. MARTIN,
OF SPURLOCK-NEAL COMPANY, WHOLESALE DRUGS.

Univ Calif - Digitized by Microsoft ®

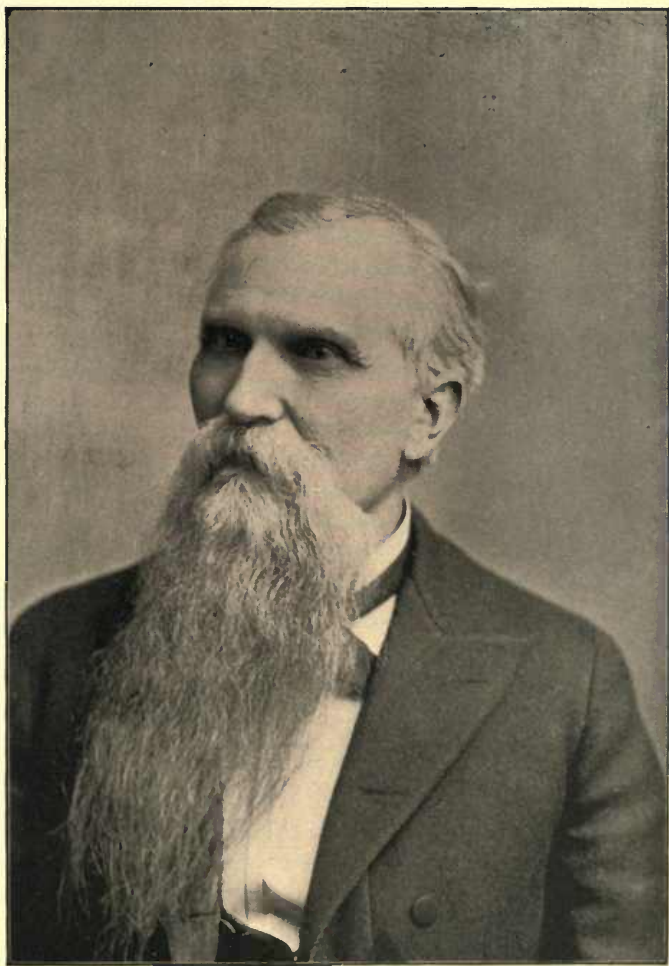


PHOTO BY CALVERT BROS. & TAYLOR.

JAMES B. STEPHENS, M. D.

Univ Calif - Digitized by Microsoft ®

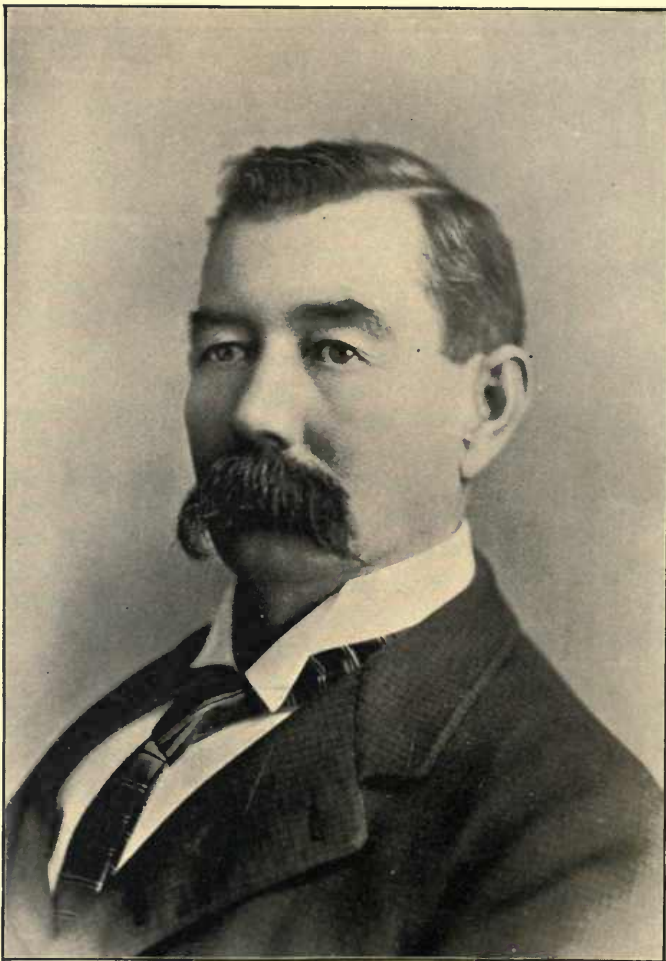


PHOTO BY OTTO GIERS.

JAS. H. JAMISON,

GEN'L STATE AGENT OF THE MICHIGAN MUTUAL LIFE INS. CO.

DETROIT, MICHIGAN.

Univ Calif - Digitized by Microsoft ®



PHOTO BY OTTO GIERS.

M. M. KLINE,
OF KLINE & CRUZEN REAL ESTATE CO.
AND PRESIDENT GRANDVIEW LAND CO.

Univ Calif - Digitized by Microsoft®



PHOTO BY OTTO GIER.

DEPARTMENT OF DENTISTRY,
VANDERBILT UNIVERSITY.

Univ Calif - Digitized by Microsoft ®

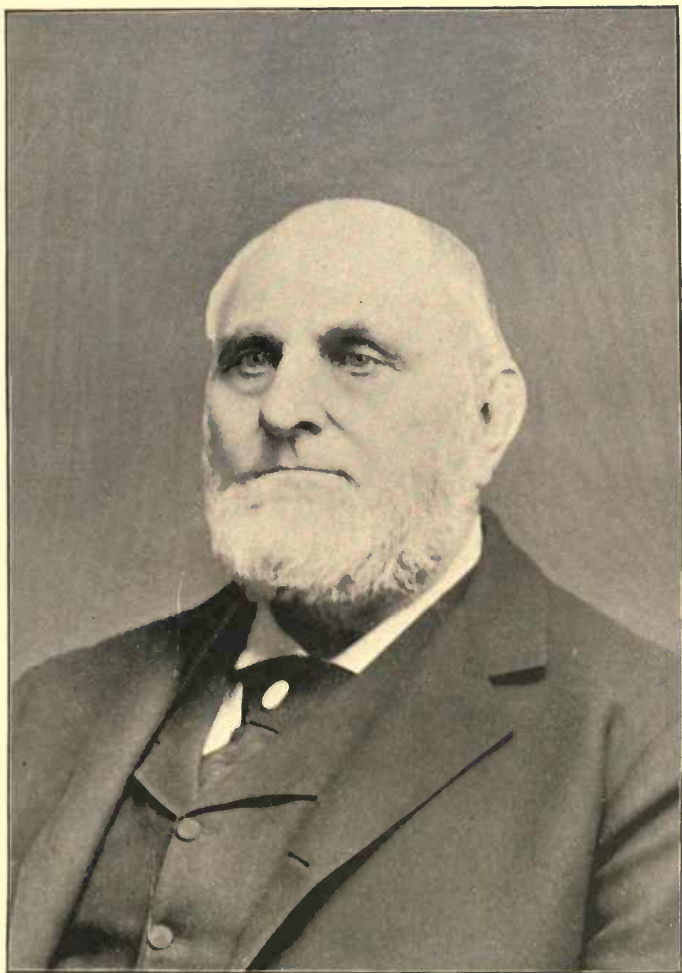


PHOTO BY CALVERT BROS. & TAYLOR.

W. H. MORGAN, M. D., D. D. S.

DEAN OF THE DEPARTMENT OF DENTISTRY.

Univ Calif VANDERBILT UNIVERSITY *Digitized by Microsoft®*

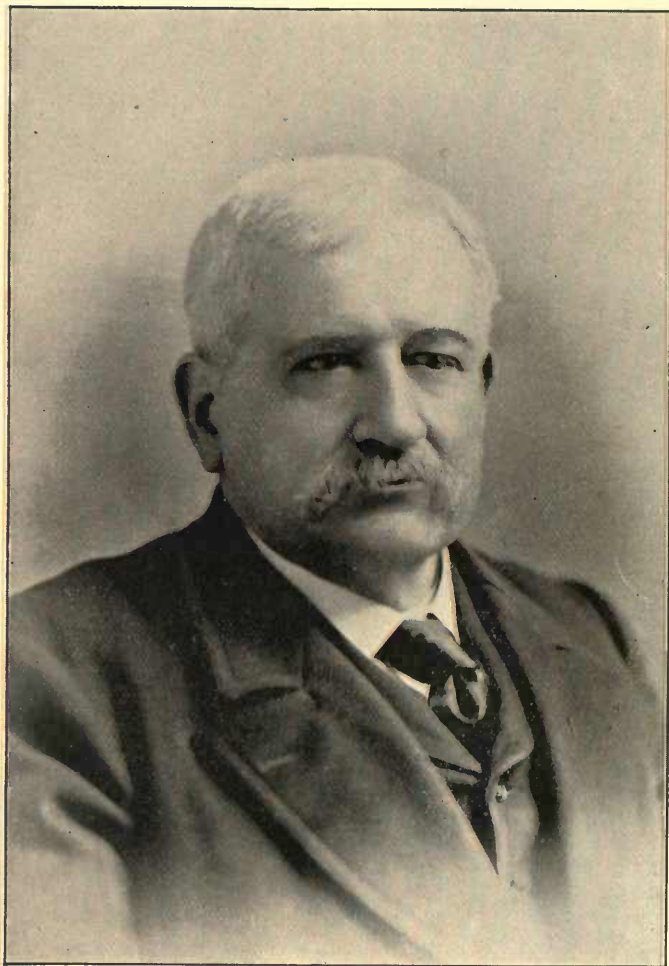


PHOTO BY OTTO GIER.

FRANK W. GREEN,

FIRE, LIFE AND ACCIDENT INSURANCE.

Univ Calif - Digitized by Microsoft ®

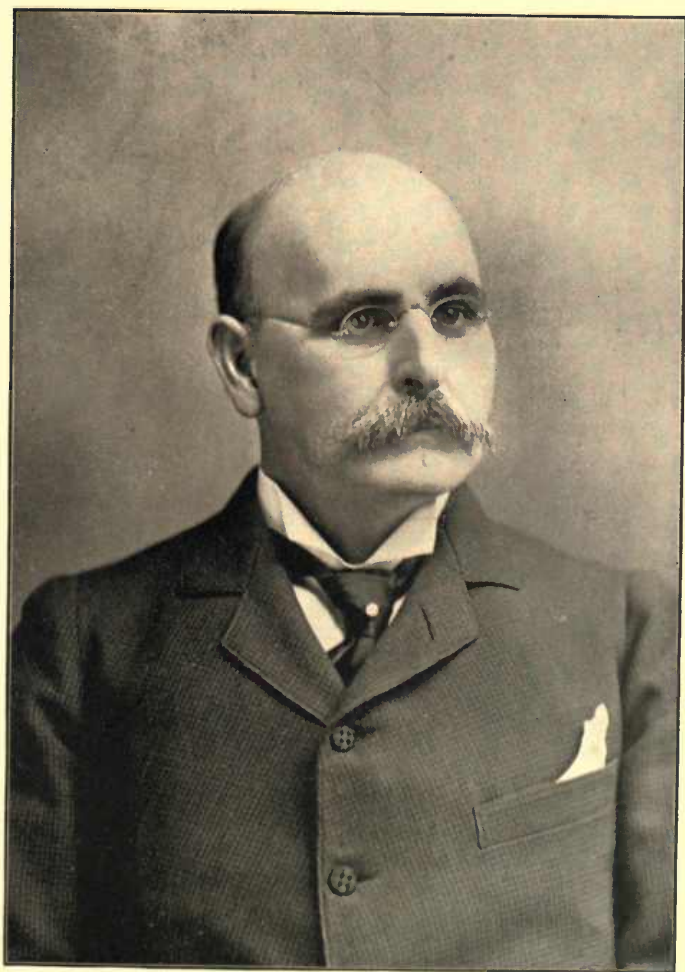


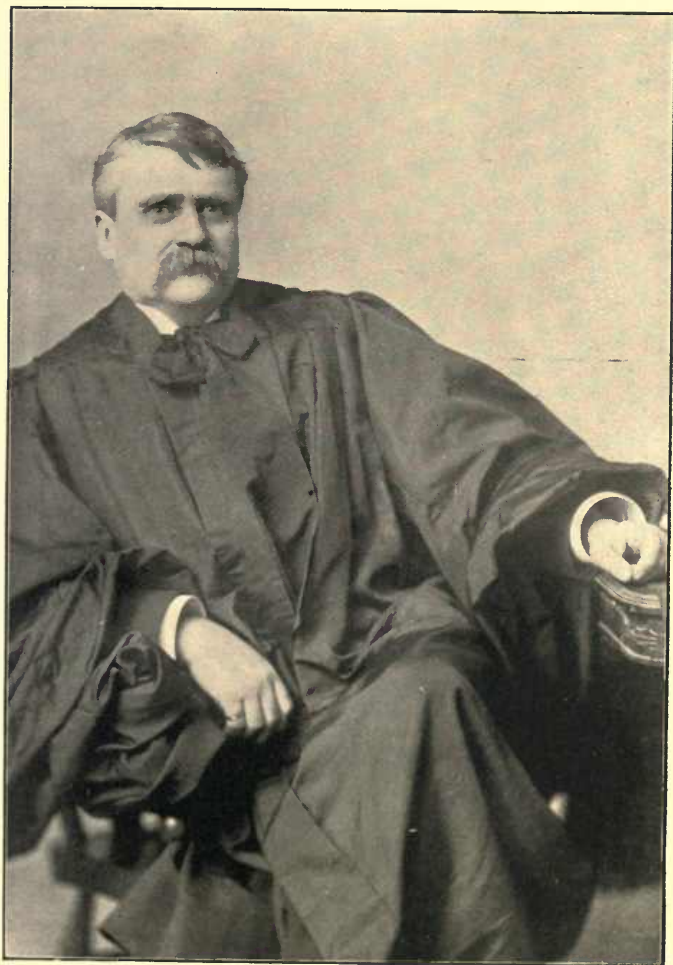
PHOTO BY CALVERT BROS. & TAYLOR.

DR. HENRY W. MORGAN.



PHOTO BY BRANDON PRINTING CO.

RESIDENCE OF JUDGE HORACE H. LURTON.



HORACE H. LURTON,
JUDGE UNITED STATES COURT OF APPEALS.
Univ Calif - Digitized by Microsoft ®



PHOTO BY OTTO GIERS.

WEST END CHURCH.

Univ Calif - Digitized by Microsoft ®



PHOTO BY OTTO GIER.

REV. J. B. ERWIN,

PASTOR, WEST END, M. E. CHURCH SOUTH, 1895.

Univ Calif - Digitized by Microsoft®

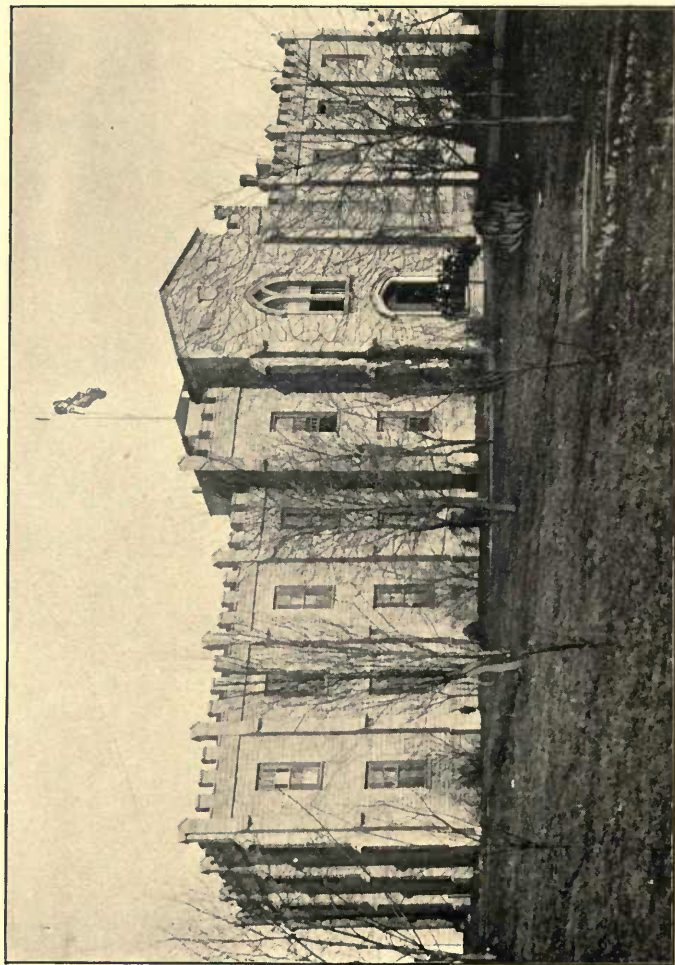


PHOTO BY OTTO GIER.

UNIVERSITY OF NASHVILLE—CHAPEL.

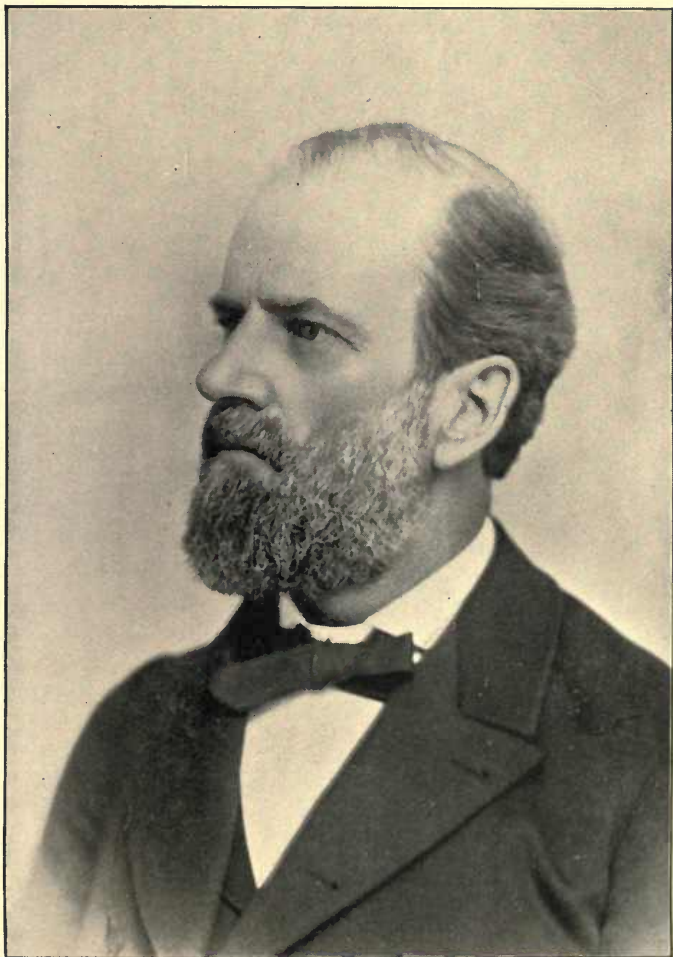


PHOTO BY OTTO GIERS.

W. H. PAYNE, LL. D.

CHANCELLOR AND PRESIDENT UNIVERSITY OF NASHVILLE
Univ Calif - Digitized by Microsoft®
AND PEABODY NORMAL COLLEGE.



PHOTO BY OTTO GIER.

CASTLE HALL OF JOEL A. BATTLE LODGE, No. 84,
KNIGHTS OF PYTHIAS.

Univ Calif - Digitized by Microsoft ®

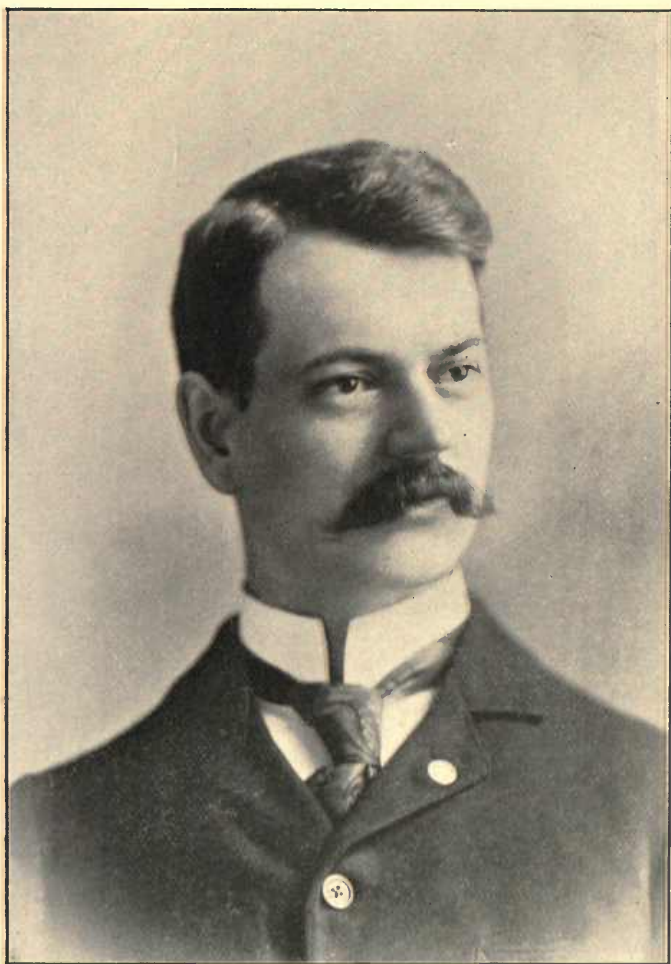


PHOTO BY OTTO GIERS.

W. R. PAYNE,

SECRETARY AND TREASURER UNIVERSITY OF NASHVILLE
AND PEABODY NORMAL COLLEGE.



PHOTO BY CALVERT BROS. & TAYLOR.

DAVID M. SMITH,

MANAGER PUBLISHING HOUSE OF THE M. E. CHURCH SOUTH.

Univ Calif - Digitized by Microsoft®

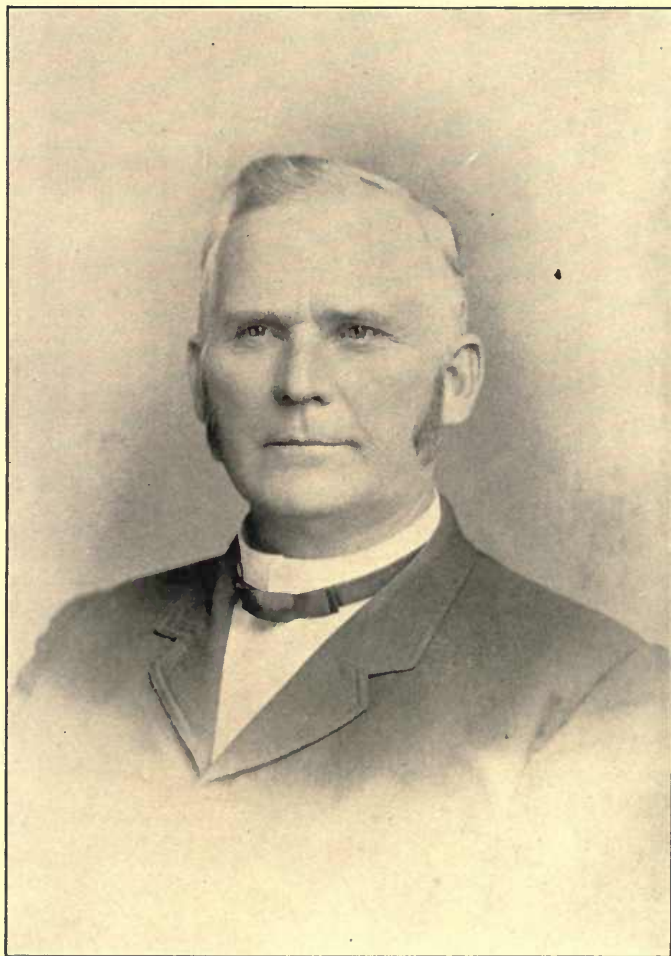


PHOTO BY CALVERT BROS. & TAYLOR.

DR. J. D. BARBEE,

AGENT PUBLISHING HOUSE OF THE M. E. CHURCH SOUTH.

Univ Calif - Digitized by Microsoft ®



PHOTO BY OTTO GIERS.

C. S. LILLIE,

CONTRACTOR AND BUILDER.

Univ Calif - Digitized by Microsoft ®



PHOTO BY OTTO GIERS.

J. CRUM EPLER, M. D.

Univ Calif - Digitized by Microsoft ®

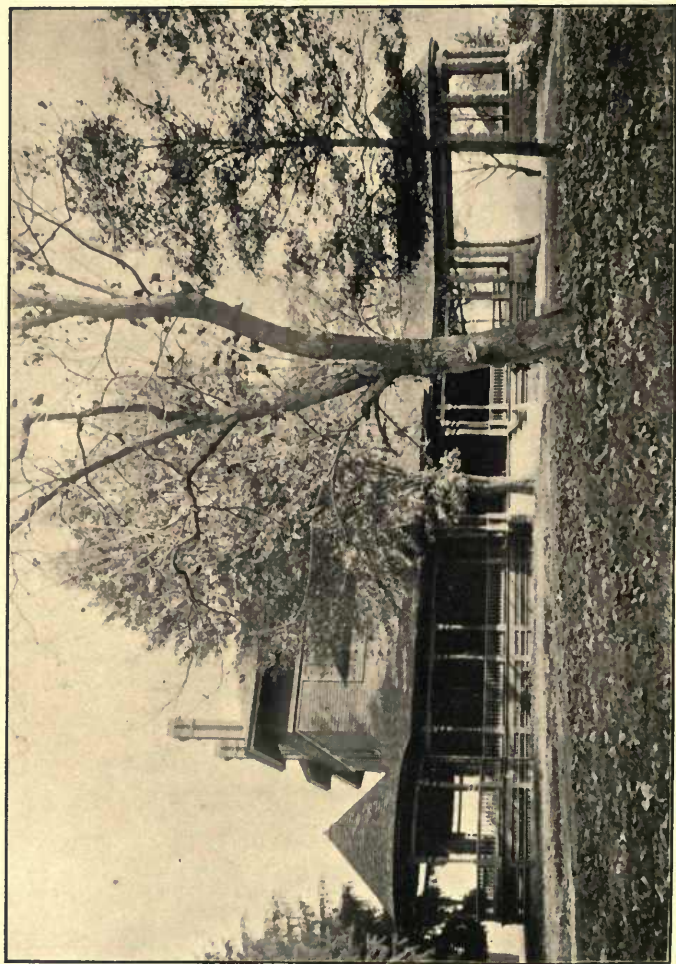


PHOTO BY OTTO GIER.

"MELROSE," RESIDENCE OF G. M. FOGG.



PHOTO BY OTTO GIER.

RESIDENCE OF F. M. HAMILTON.

PRESIDENT INDIANA LUMBER CO.

Univ Calif - Digitized by Microsoft®



PHOTO BY OTTO GIER.

CHAS. FRANKLAND,

WHOLESALE NOTIONS, WHITE GOODS, AND GENTS' FURNISHINGS.

Univ Calif - Digitized by Microsoft ®



PHOTO BY OTTO GIER.

CHURCH A. ALLEN.

MANAGER REINECKE COAL COMPANY



PHOTO BY OTTO CIERS.

INTERIOR OF L. R. FREEMAN & CO.'S STORE,
WALL PAPER, MIRRORS, AND DECORATIONS.



PHOTO BY OTTO GIER.

L. R. FREEMAN.

THE WALL PAPER PIONEER.

Univ Calif - Digitized by Microsoft®



PHOTO BY OTTO GIERS.

RESIDENCE OF B. J. MCCARTHY.



PHOTO BY OTTO GIERS.

B. J. McCARTHY,

SUPERINTENDENT PHILLIPS & BUTTOREFF MANUFACTURING
COMPANY.

Univ Calif - Digitized by Microsoft®

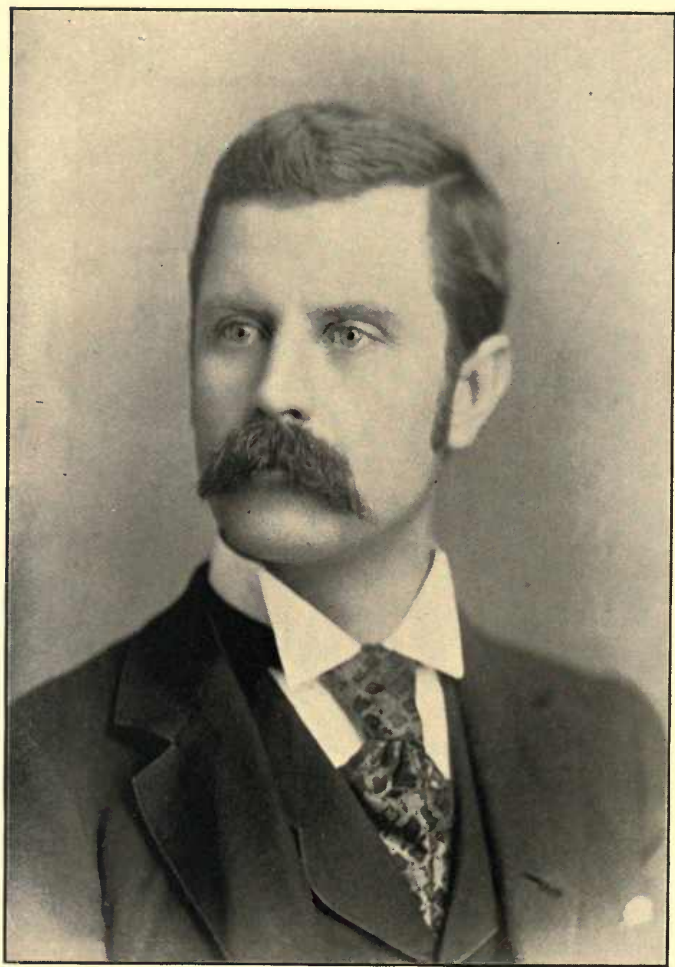


PHOTO BY OTTO GIERS.

JOHN M. PICTON.

FIRE AND LIFE UNDERWRITER.

Univ Calif - Digitized by Microsoft ®



PHOTO BY OTTO GIERS.

GUS DEMERICH,

PLUMBING, GAS AND STEAM FITTING CONTRACTOR.



PHOTO BY OTTO GIERS.

JOHN D. BRIEN,

ATTORNEY AT LAW.

Univ Calif - Digitized by Microsoft ®



PHOTO BY OTTO GIER.

CHARLES BREYER,

PIONEER IN THE RUSSIAN AND TURKISH BATH BUSINESS.

Univ Calif - Digitized by Microsoft®



PHOTO BY OTTO GIER.

CUMBERLAND PRESBYTERIAN PUBLISHING HOUSE.



PHOTO BY OTTO GIER.

JOHN M. GAUT,

ATTORNEY FOR AMERICAN NATIONAL BANK.

AND

GENERAL MANAGER OF PUBLISHING WORK OF CUMBERLAND

PRESBYTERIAN CHURCH

Univ Calif - Digitized by Microsoft®



PHOTO BY BRANDON PRINTING COMPANY.

ELM STREET M. E. CHURCH, SOUTH.

Univ Calif - Digitized by Microsoft ®



PHOTO BY OTTO GIER.

REV. W. T. HAGGARD,

PASTOR ELM STREET M. E. CHURCH, SOUTH.

Univ Calif - Digitized by Microsoft®



PHOTO BY OTTO GIERS.

THOS. CALLENDER,
SOUTHERN AGENT LAFLIN & RAND POWDER COMPANY.

Univ Calif - Digitized by Microsoft ®

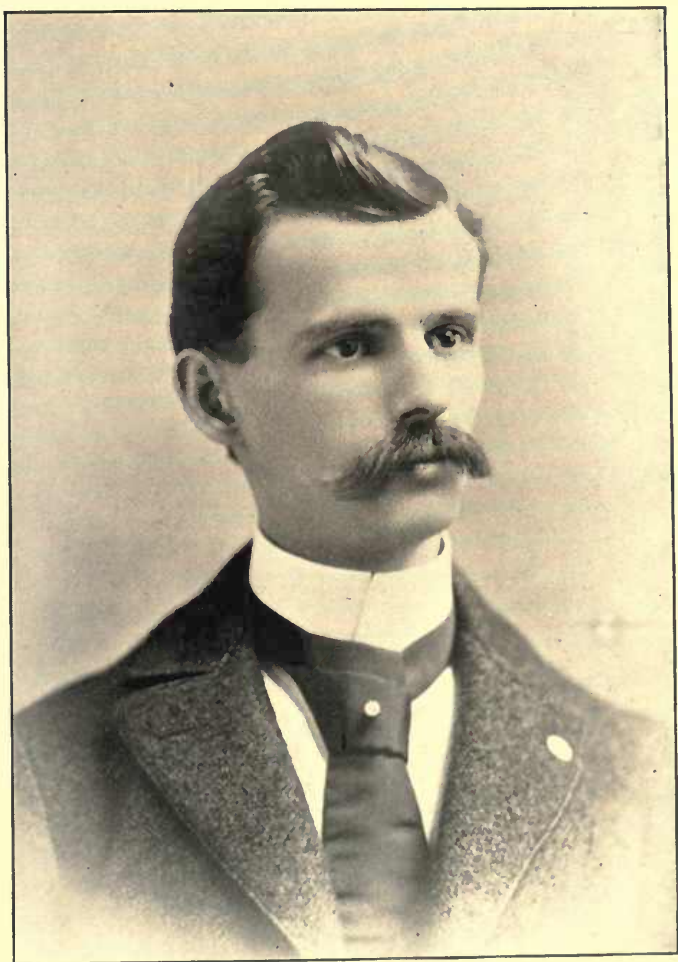


PHOTO BY OTTO GIER.

F. S. KINNAIRD,

MANAGER POSTAL TELEGRAPH COMPANY.

Univ Calif - Digitized by Microsoft®



PHOTO BY BRANDON PRINTING COMPANY.

THE BANNER BUILDING.

Univ Calif - Digitized by Microsoft ®



PHOTO BY OTTO GIER.

EDGAR M. FOSTER.

Univ. Calif. Digitized by Microsoft®
BUSINESS MANAGER OF THE NASHVILLE BANNER.



GIDEON H. BASKETTE,
EDITOR-IN-CHIEF OF THE NASHVILLE BANNER.
Univ Calif - Digitized by Microsoft ®



MR. E. B. STAHLMAN.

Univ Calif - Digitized by Microsoft®



PHOTO BY BRANDON PRINTING COMPANY.

THE AMERICAN NATIONAL BANK BUILDING.

Univ Calif - Digitized by Microsoft ®



PHOTO BY BRANDON PRINTING COMPANY.

THE FOURTH NATIONAL BANK BUILDING.
Univ Calif - Digitized by Microsoft®

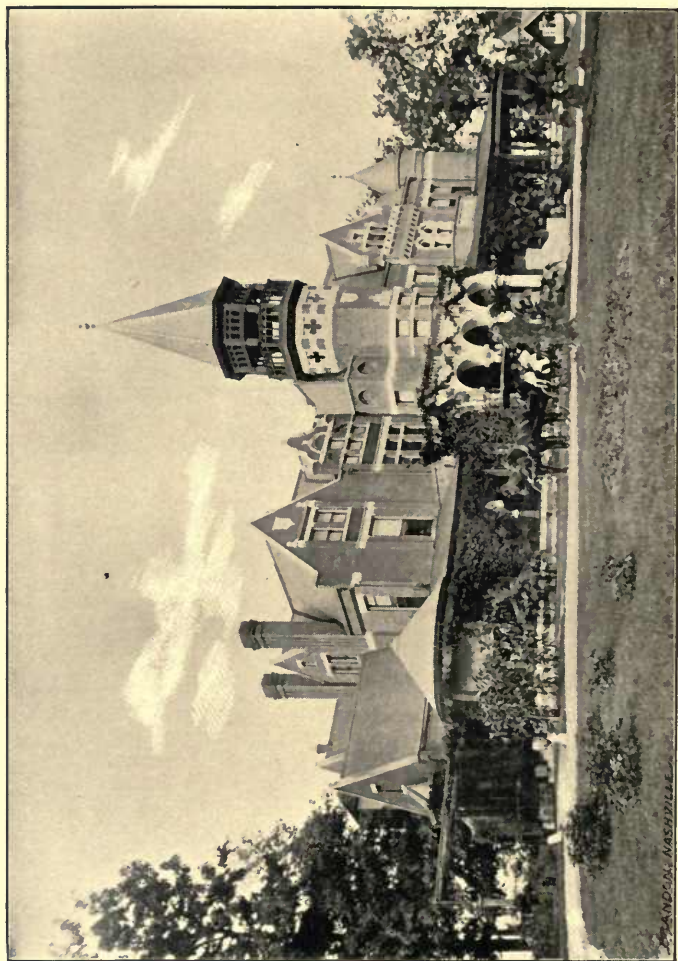


PHOTO BY OTTO GIER.

RESIDENCE OF VAN L. KIRKMAN.

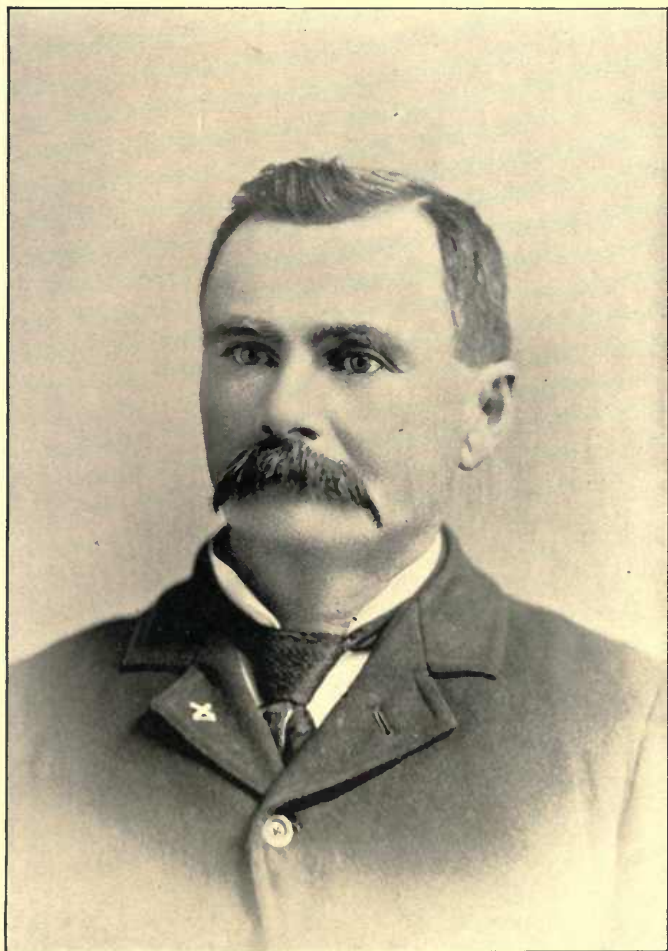


PHOTO BY OTTO GIERS.

EDWARD LAURENT,

Univ Calif **Digitized by Microsoft®**
CONTRACTOR AND BUILDER.

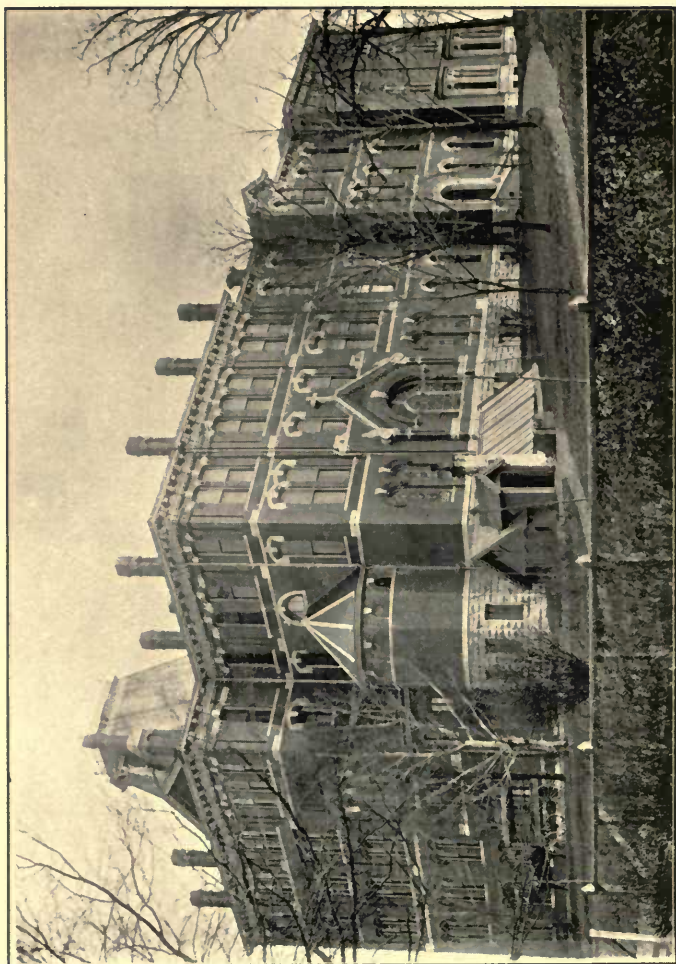


PHOTO BY OTTO GIER.

ST. CECILIA ACADEMY,

CONDUCTED BY DOMINICAN SISTERS.



PHOTO BY OTTO GIERS.

C. LARSEN.

MANUFACTURER OF PICTURE FRAMES.

Univ Calif - Digitized by Microsoft®



PHOTO BY OTTO GIER.

SALESROOM OF CHAS. THURMAN & CO.



PHOTO BY OTTO GIER.

CHAS. THURMAN,
THE CLOTHIER.

Univ Calif - Digitized by Microsoft ®



PHOTO BY BRANDON PRINTING COMPANY.

NASHVILLE COLLEGE FOR YOUNG LADIES.

Univ Calif - Digitized by Microsoft ®



REV. GEO. W. F. PRICE, D. D.

PRESIDENT NASHVILLE COLLEGE FOR YOUNG LADIES.

Univ Calif - Digitized by Microsoft ®



PHOTO BY OTTO GIER.

THOMAS H. WEBB,

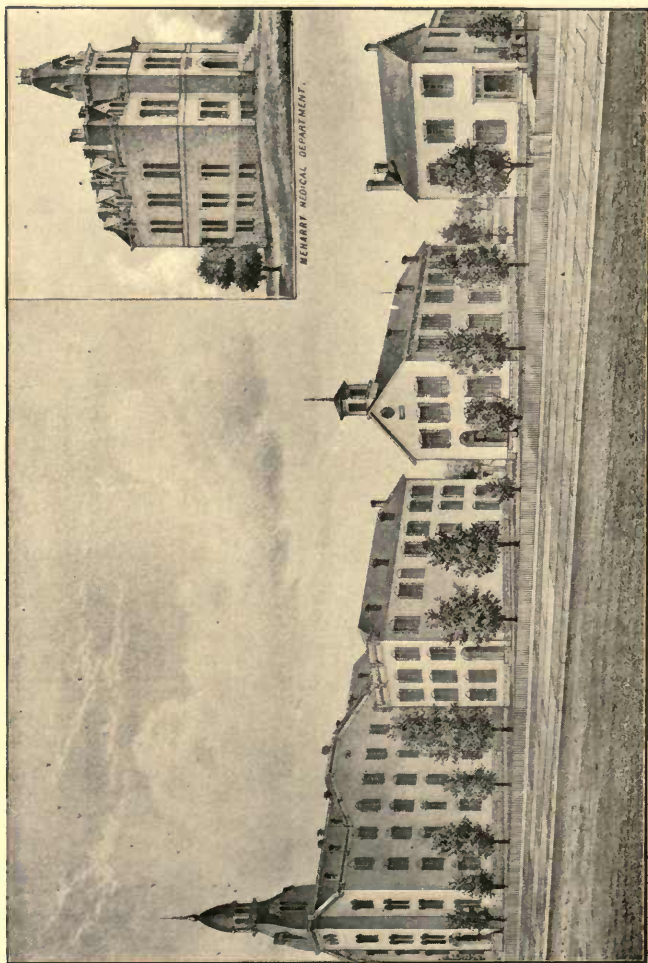
OF DuBois & Webb. AGENTS FOR THE ELECTROPOISE.

Univ Calif - Digitized by Microsoft®



JOHN E. DUBOIS.

OF DUBOIS & WEBB, AGENTS FOR THE ELECTROPOSE®
Univ. Calif. Digitized by Microsoft®



CENTRAL TENNESSEE COLLEGE.



PHOTO BY OTTO GIER.

J. BRADEN, D. D.

PRESIDENT CENTRAL TENNESSEE COLLEGE



PHOTO BY OTTO GIERS.

HENRY KLEIN,

BUILDING INSPECTOR, CITY OF NASHVILLE.

Univ Calif - Digitized by Microsoft ®



PHOTO BY CALVERT BROS. & TAYLOR.

LOUIS G. PALABOT,

PRINCIPAL NASHVILLE SCHOOL OF LANGUAGES.

Univ Calif - Digitized by Microsoft®

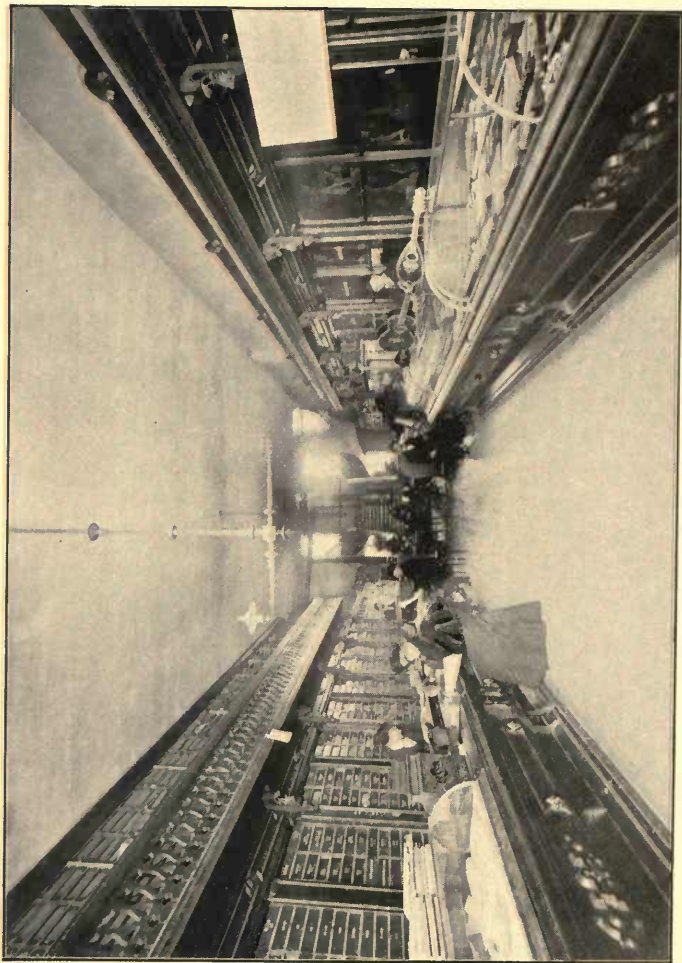


PHOTO BY OTTO GIERS.
RETAIL SALESROOM OF THE H. A. FRENCH CO.



PHOTO BY OTTO GIERS.

WILLCOX BUILDING.

Univ Calif - Digitized by Microsoft®

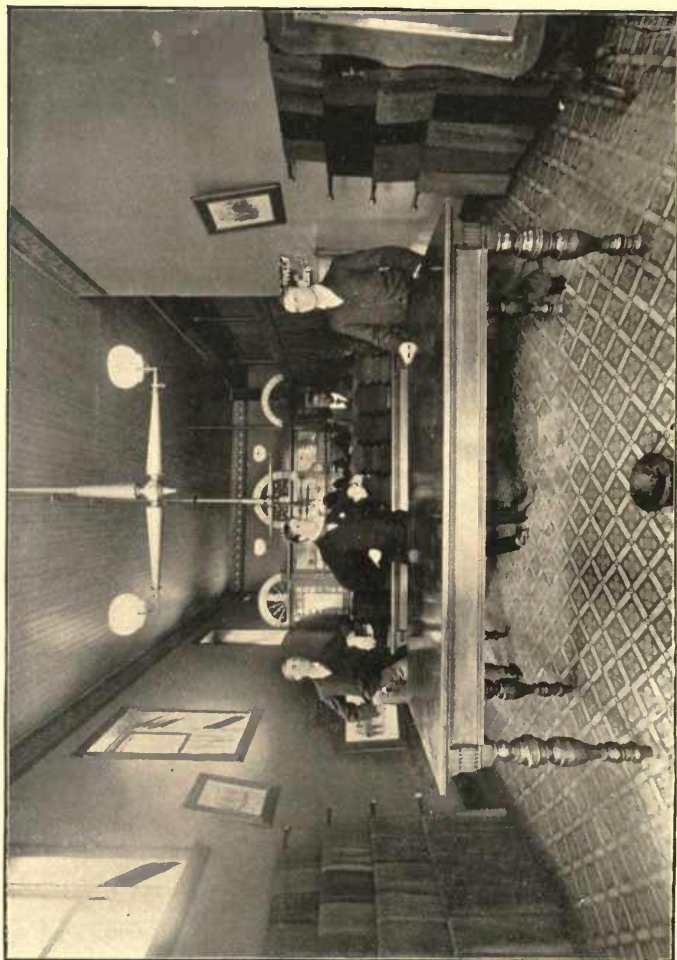


PHOTO BY OTTO GIER.

BAILEY & TOBIN, MERCHANT TAILORS.

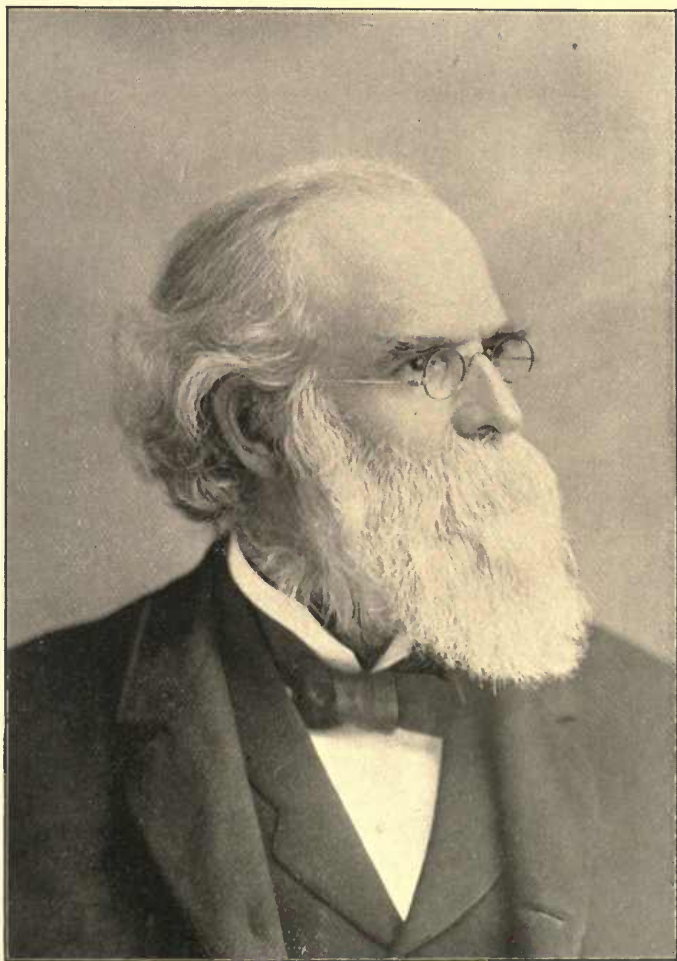
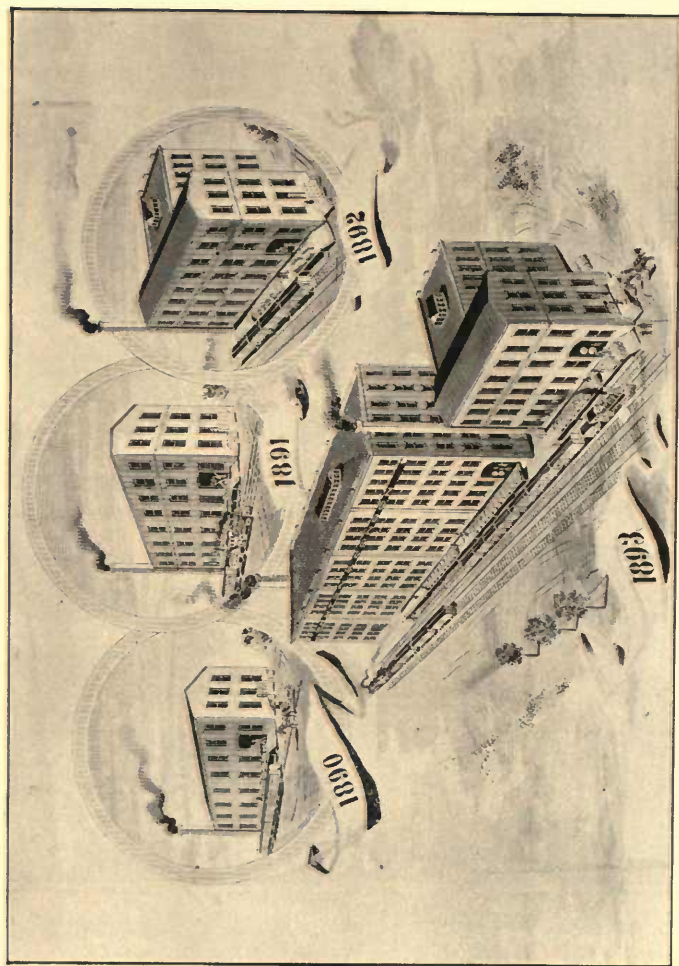


PHOTO BY CALVERT BROS. & TAYLOR.

REV. E. M. CRAVATH, D. D.

PRESIDENT FISK UNIVERSITY.

Univ Calif - Digitized by Microsoft ®



BRUTON & CONDON'S SNUFF MANUFACTURING ESTABLISHMENT.



PHOTO BY OTTO GIERS.

JERE BAXTER.



PHOTO BY OTTO GIERS.

RESIDENCE OF W. V. DAVIDSON,

GENERAL MANAGER THE W. V. DAVIDSON LUMBER COMPANY.



PHOTO BY OTTO GIERS.

W. V. DAVIDSON,

GENERAL MANAGER THE W. V. DAVIDSON LUMBER COMPANY.

Univ Calif - Digitized by Microsoft®

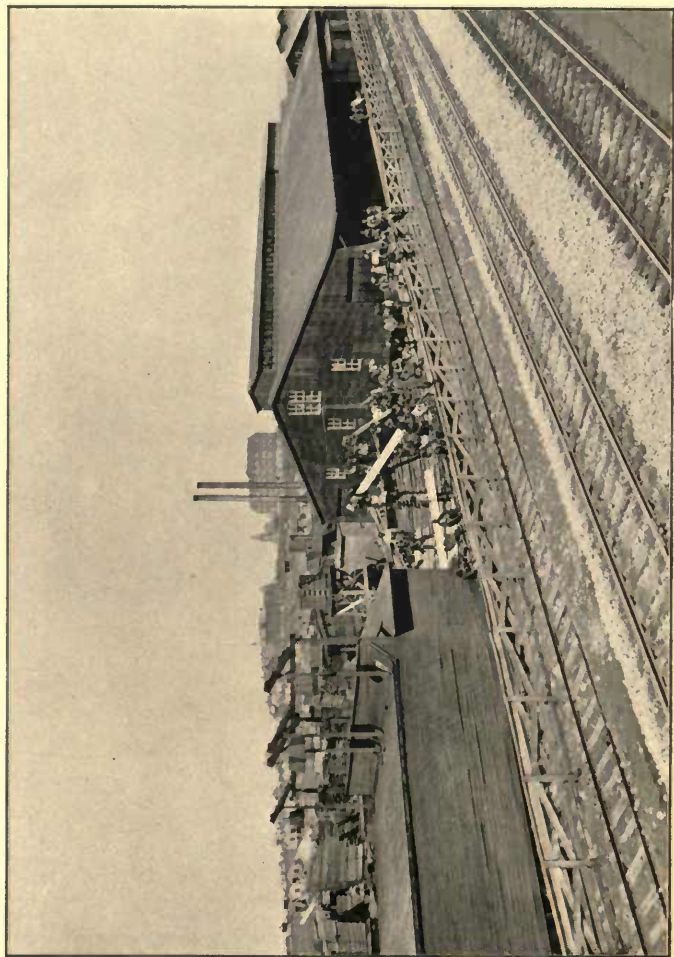


PHOTO BY OTTO GIER.

PLANT OF JOHN B. RANSOM & CO.

MANUFACTURERS AND WHOLESALE DEALERS IN LUMBER.



PHOTO BY OTTO GIER.

LEWIS F. BUTLER,

GENERAL AGENT MASSACHUSETTS BENEFIT LIFE ASSOCIATION,

BOSTON, MASS.

Univ Calif - Digitized by Microsoft ®



PHOTO BY OTTO GIER.

GRACE CUMBERLAND PRESBYTERIAN CHURCH.
Univ Calif - Digitized by Microsoft®



PHOTO BY OTTO GIERS.

REV. W. T. RODGERS.

Univ. Calif. - Digitized by Microsoft®
PASTOR, GRACE CUMBERLAND PRESBYTERIAN CHURCH.

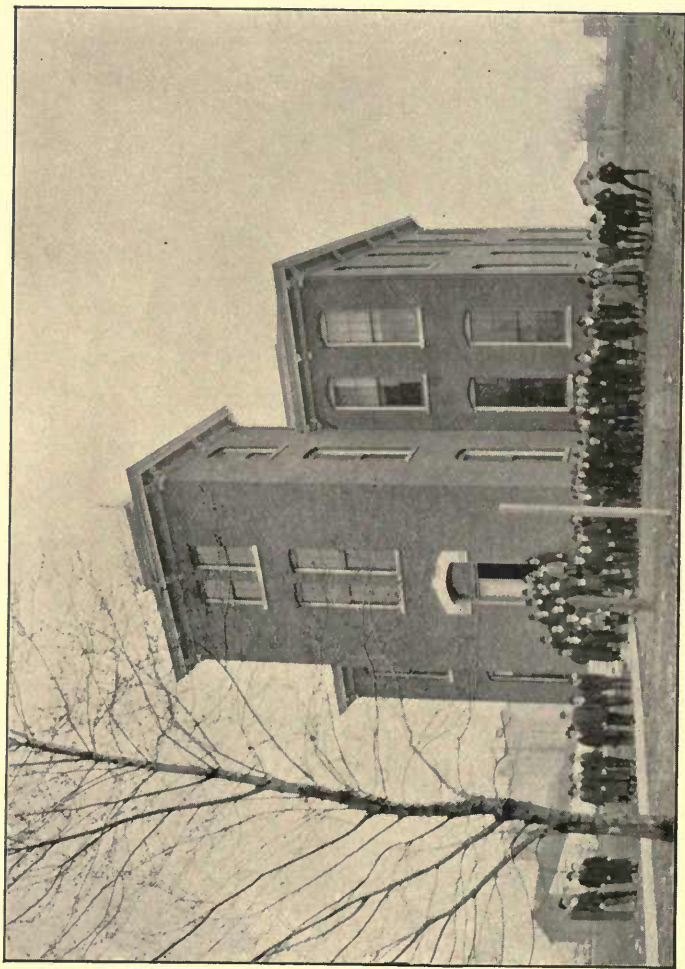


PHOTO BY OTTO GIERS.

MONTGOMERY BELL,
ACADEMIC DEPARTMENT UNIVERSITY OF NASHVILLE.



PHOTO BY OTTO GIER.

RESIDENCE OF CHAS. H. SWEENEY.

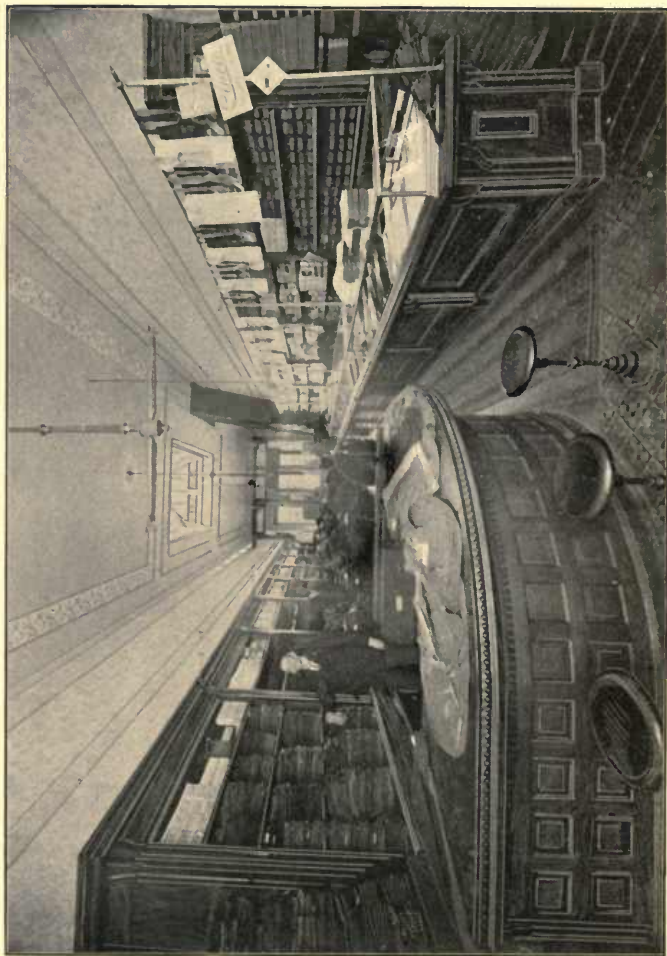


PHOTO BY OTTO GIERS.

SALESROOM OF HUNTINGTON, CLOTHIER.

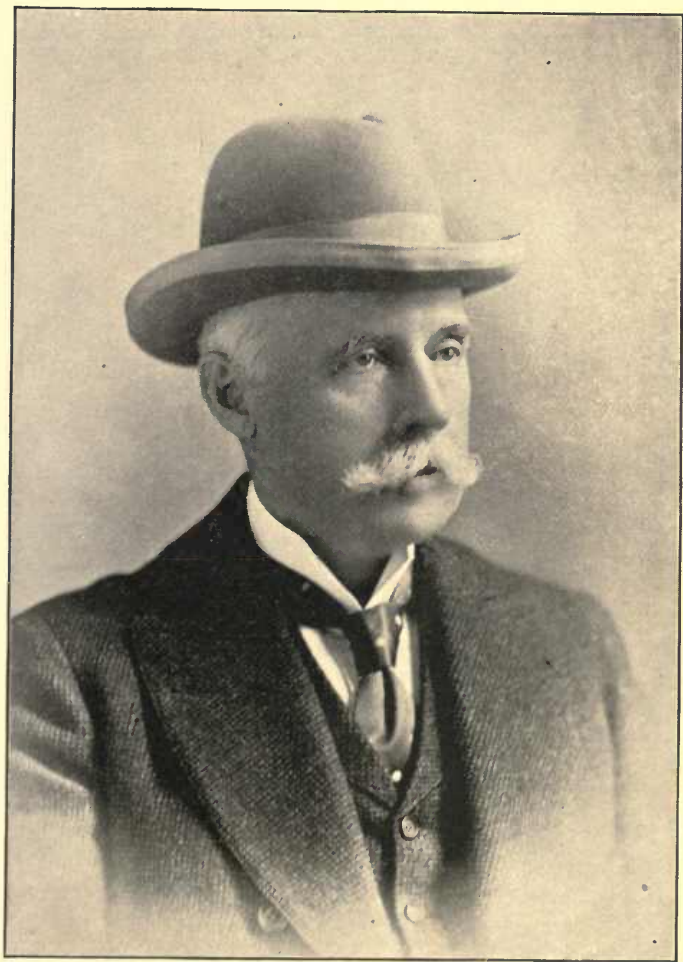


PHOTO BY OTTO GIERS.

H. A. HUNTINGTON.

Univ Calif - Digitized by Microsoft ®



PHOTO BY OTTO GIER

PROPERTY OF M. H. CARTWRIGHT.

Univ Calif - Digitized by Microsoft ®



PHOTO BY OTTO GIERS.

M. H. CARTWRIGHT.

DEALER IN REAL ESTATE.

Univ Call - Digitized by Microsoft®



PHOTO BY BRANDON PRINTING CO.

OFFICE AND WORKS NASHVILLE LAUNDRY CO.



LEO D. WEGE,

PROPRIETOR NASHVILLE LAUNDRY COMPANY.



FREDERIC EMERSON FARRAR.

VOCAL TEACHER AND COMPOSER.

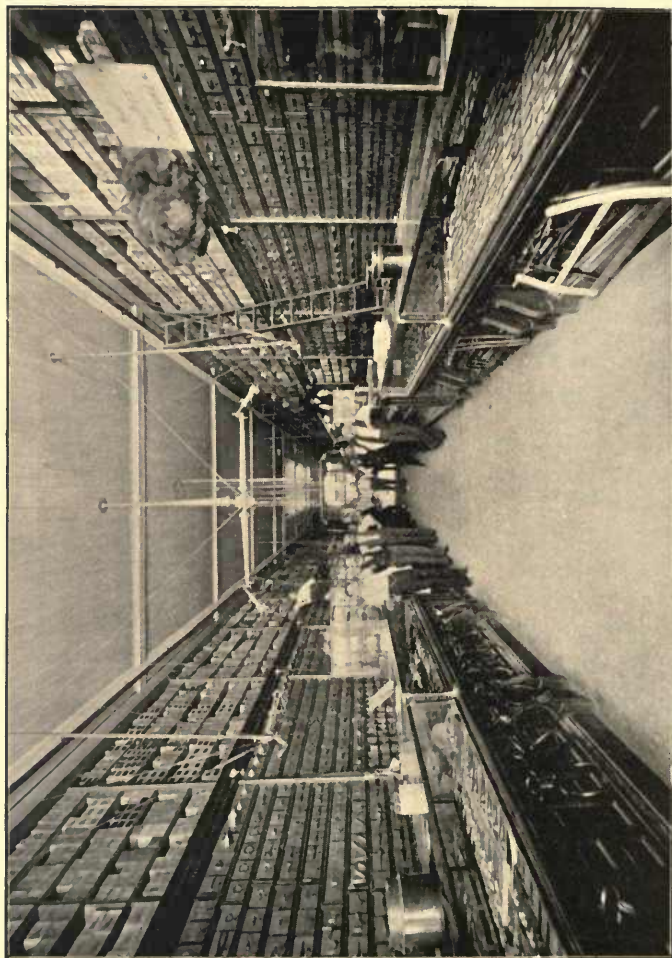


PHOTO BY OTTO GIERS.

J. H. CURREY, M. D.

ASSISTANT POSTMASTER, NASHVILLE, TENN.

Univ Calif - Digitized by Microsoft®



RETAIL DEPARTMENT OF J. H. FALL & CO.



SALESROOM OF SPURLOCK-NEAL COMPANY.

WHOLESALE DRUGGISTS.

Univ Calif - Digitized by Microsoft ®



THE AMERICAN.



PHOTO BY OTTO GIERS.

JONAS TAYLOR,
THE HORSESHOER.

Univ Calif - Digitized by Microsoft ®



W. G. SADLER,
GENERAL MANAGER NATIONAL FERTILIZER COMPANY.



PHOTO BY CALVERT BROS. & TAYLOR.

WHARTON J. ALLEN.

Univ Calif - Digitized by Microsoft®



PHOTO BY CALVERT BROS. & TAYLOR

CHAS. P. ELLIS,

OF FIRM OF J. ELLIS, CLOTHIER AND HATTER.

Univ Calif - Digitized by Microsoft ®



PHOTO BY OTTO GIER.

C. S. BRIGGS, M. D.

Univ Calif - Digitized by Microsoft ®



PHOTO BY CALVERT BROS. & TAYLOR.

MAJ. A. L. LANDIS,

PRESIDENT LANDIS INVESTMENT BANKING COMPANY.

Univ Calif - Digitized by Microsoft ®



PHOTO BY OTTO GIERS.

J. H. SMITH.

MANAGER MASSACHUSETTS LIFE INSURANCE COMPANY.

Univ Calif - Digitized by Microsoft®

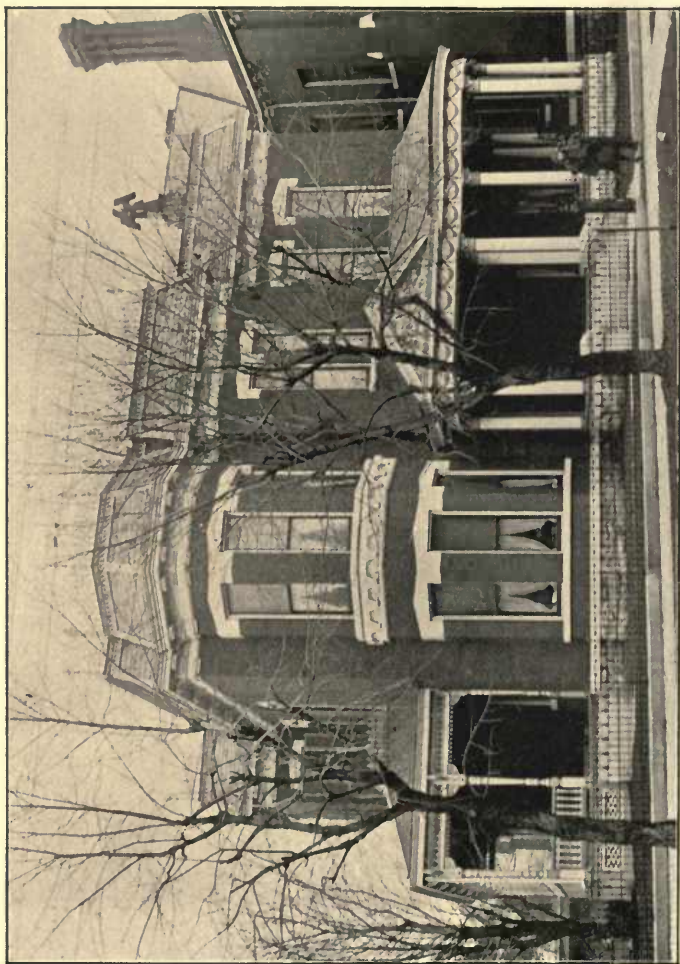


PHOTO BY OTTO GIER.

RESIDENCE OF HAMILTON PARKS, ESQ.

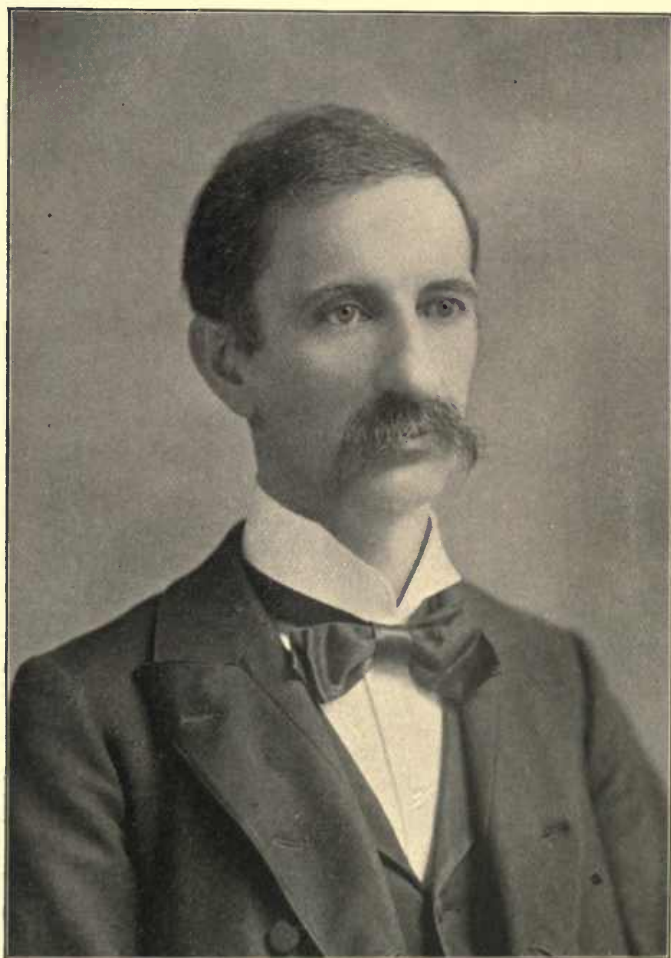
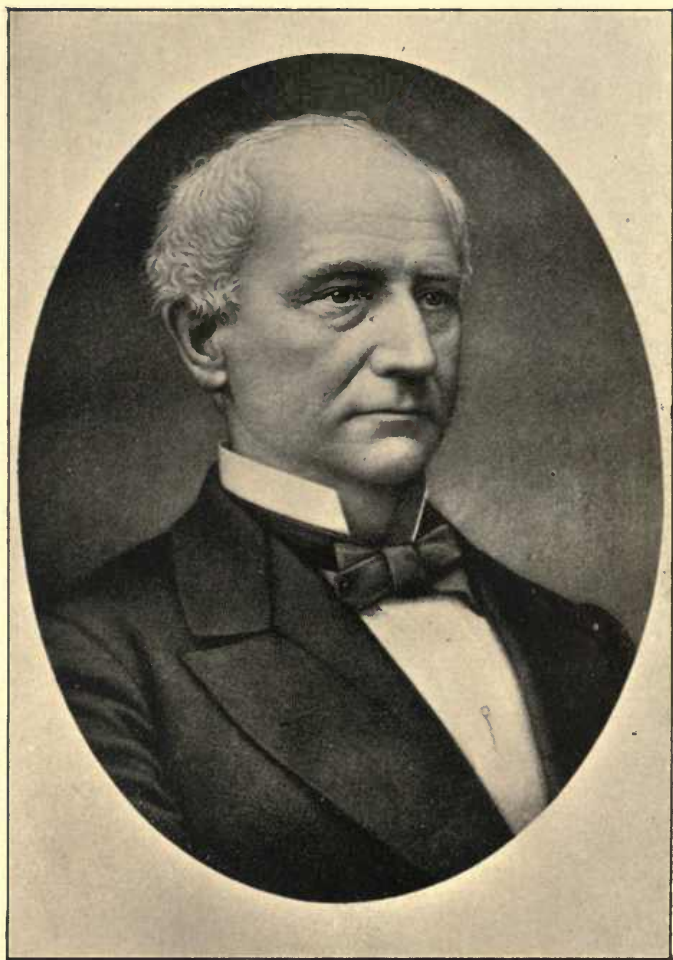


PHOTO BY OTTO GIERS.

HAMILTON PARKS.

ATTORNEY AT LAW.

Univ Calif - Digitized by Microsoft ®.



THOS. MENEES, M. D.

PROFESSOR OBSTETRICAL DEPARTMENT, VANDERBILT UNIVERSITY.

Univ Calif - Digitized by Microsoft ®



P. M. ESTES,
ATTORNEY AT LAW.



JO. LINDAUER,
OF HERMAN BROS., LINDAUER & Co., WHOLESALE DRY GOODS AND
BOOTS AND SHOES.
Univ Calif - Digitized by microsoft®

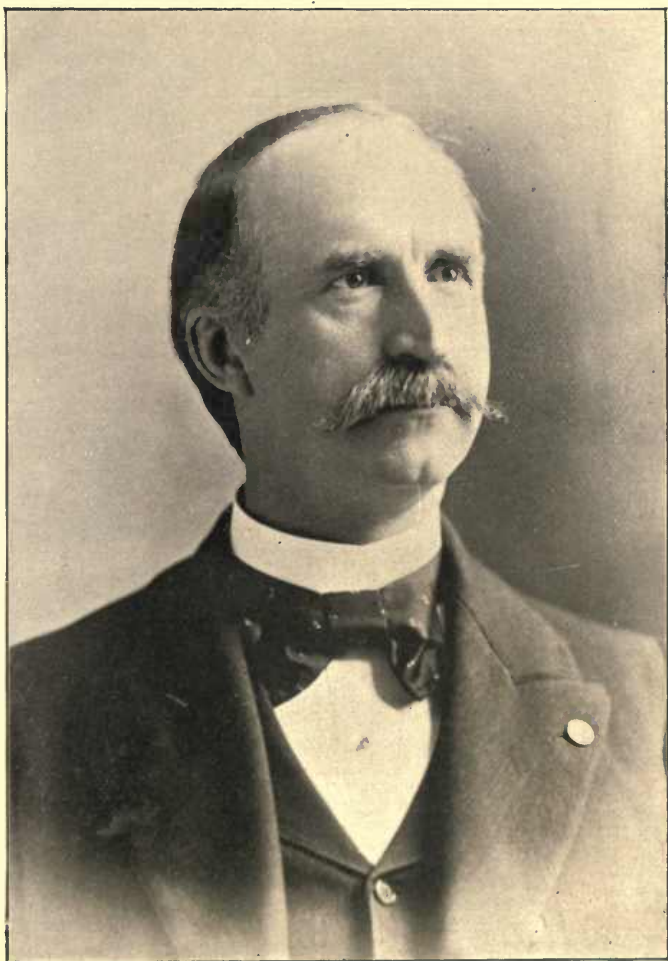


PHOTO BY CALVERT BROS. & TAYLOR.

ALBERT S. WILLIAMS.

PRESIDENT CITY COUNCIL AND CASHIER CITY SAVINGS BANK.

Univ Calif - Digitized by Microsoft ®



PHOTO BY CALVERT BROS. & TAYLOR.

WALTER M. DAKE, M. D.

Univ Calif - Digitized by Microsoft ®



PHOTO BY CALVERT BROS. & TAYLOR.

WM. C. DAKE, M. D.

Univ Calif - Digitized by Microsoft ®

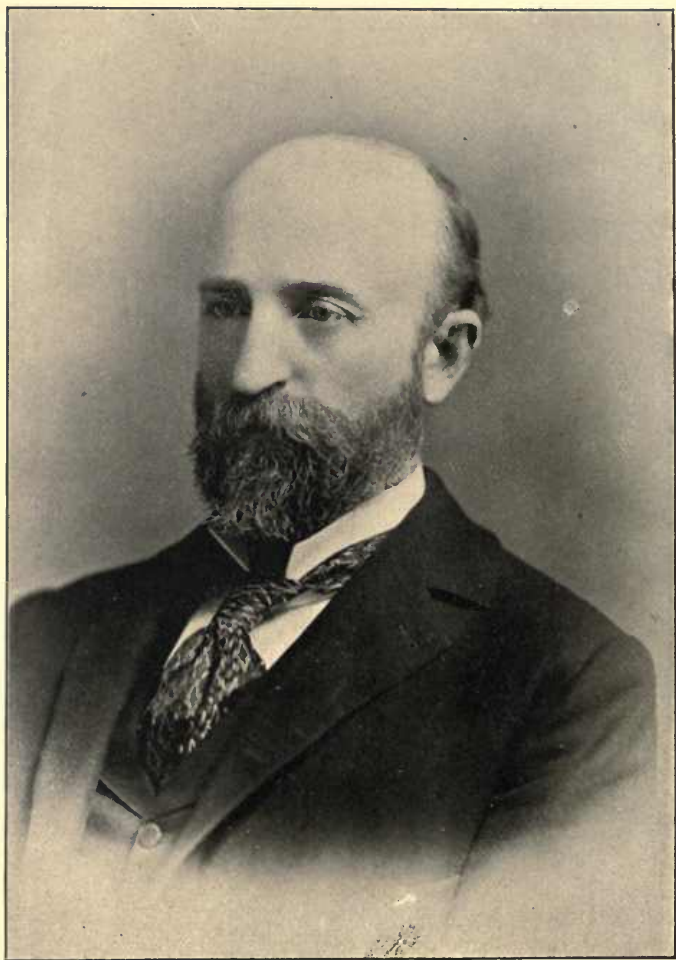


PHOTO BY OTTO GIERS.

G. N. TILLMAN,

ATTORNEY AT LAW.

Univ Calif - Digitized by Microsoft ®

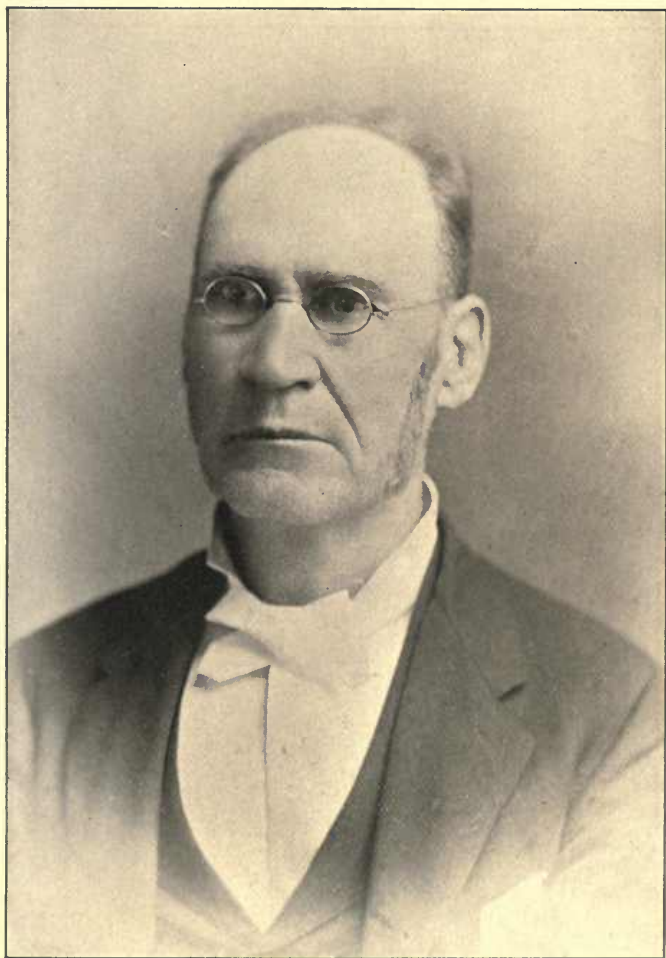


PHOTO BY OTTO GIERS.

EDWARD H. EAST,
ATTORNEY AT LAW.

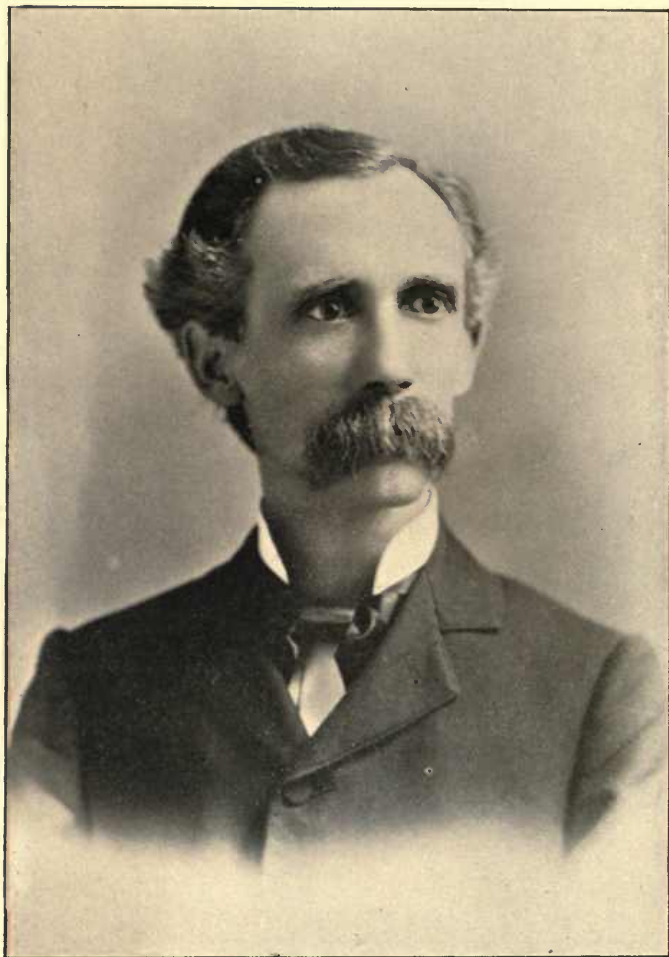


PHOTO BY OTTO GIER

JOHN A. PITTS,
ATTORNEY AT LAW.

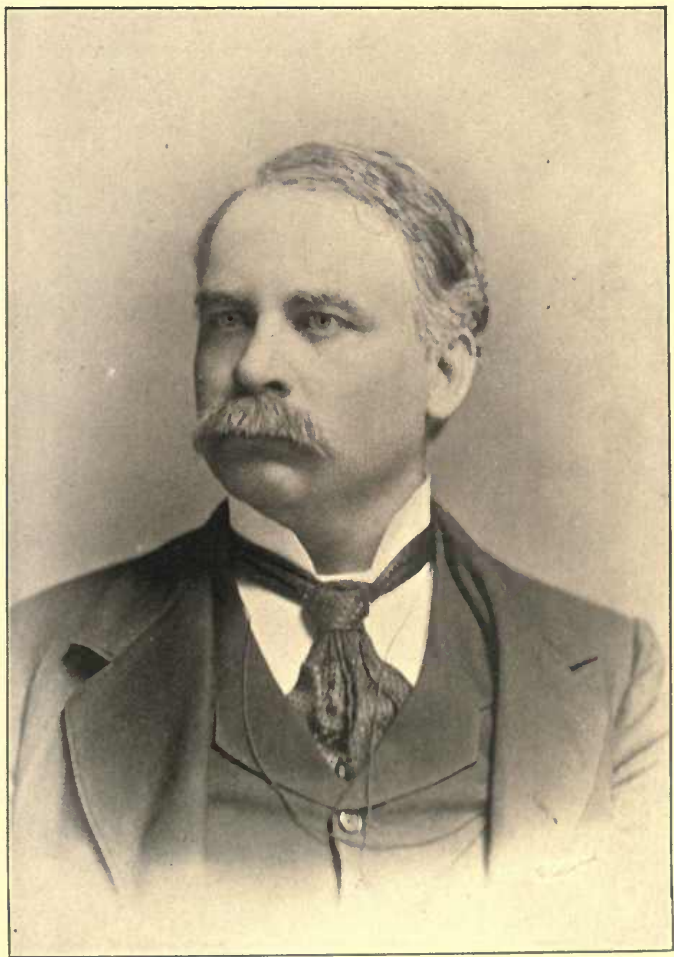


PHOTO BY OTTO GIER.

NAT. BAXTER, JR.

PRESIDENT TENNESSEE COAL, IRON & RAILROAD COMPANY.

Univ Calif - Digitized by Microsoft®.

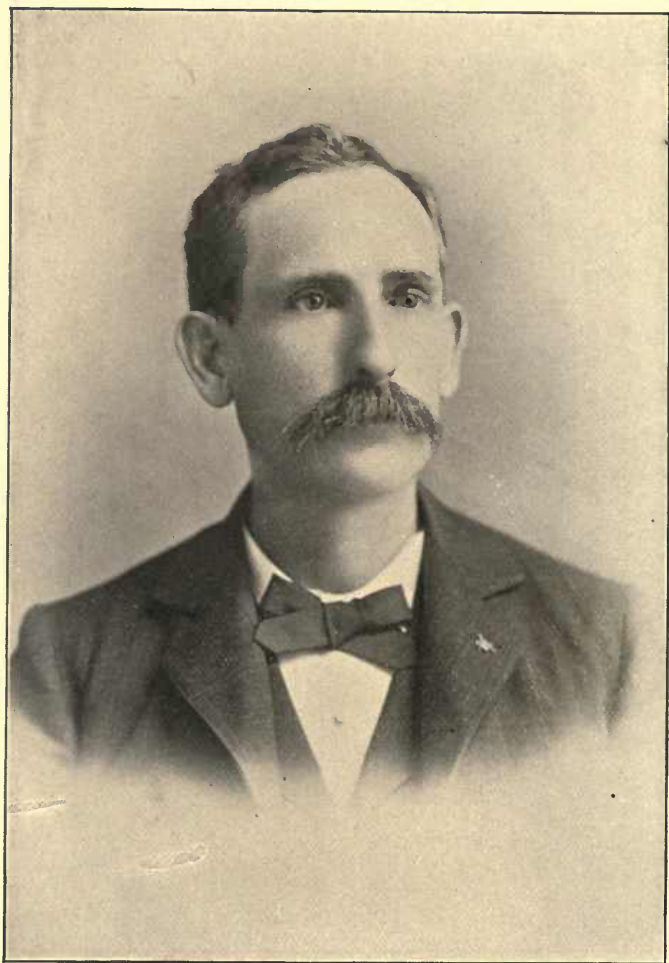


PHOTO BY OTTO GIERS.

W. W. CORE, M. D.

DAVIDSON COUNTY HEALTH OFFICER.

Univ Calif - Digitized by Microsoft®



PHOTO BY CALVERT BROS. & TAYLOR.

ANDREW JACKSON CASEY,

GENERAL MANAGER FOR WEST AND MIDDLE TENNESSEE FOR THE
NATIONAL LIFE ASSOCIATION OF HARTFORD, CONN.



INTERIOR OF GIERS' ART GALLERY.

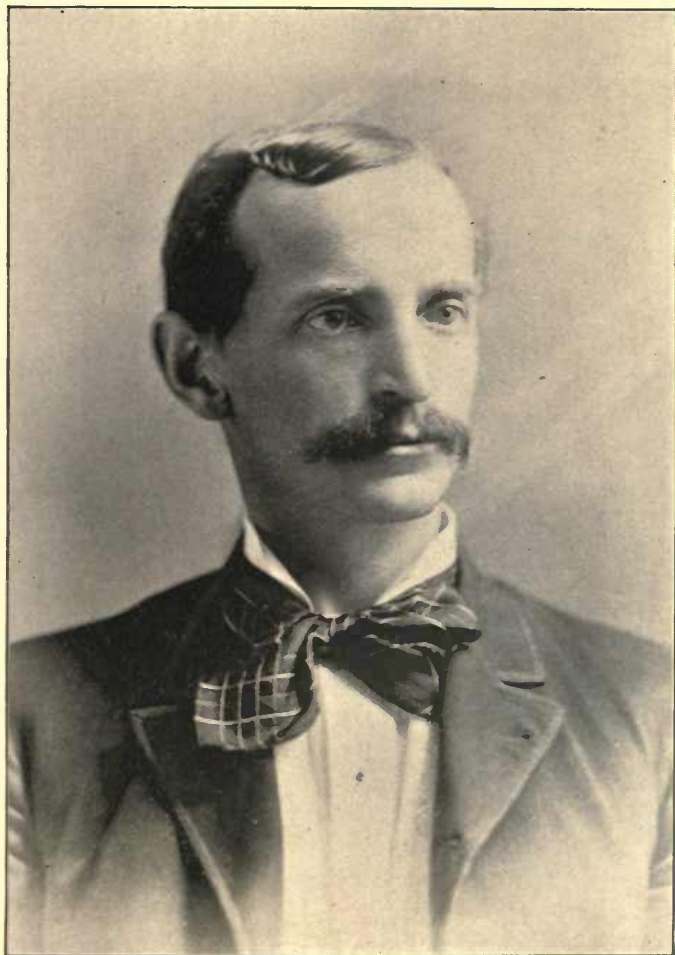


PHOTO BY OTTO GIERB

HENRY GIBEL,
ARCHITECT MACHINERY BUILDING.



PHOTO BY BRANDON PRINTING COMPANY.

BRANDON PRINTING COMPANY,
ENGRAVERS, PRINTERS AND STATIONERS.

Univ Calif - Digitized by Microsoft ®

University of California
SOUTHERN REGIONAL LIBRARY FACILITY
405 Hilgard Avenue, Los Angeles, CA 90024-1388
Return this material to the library
from which it was borrowed.

REC'D LD-1111
QL JAN 23 1995
DEC 13 1994

THE LIBRARY
Univ Calif - LOS ANGELES
UNIVERSITY OF CALIFORNIA
Digitized by Microsoft
LOS ANGELES

F Centennial
444 album of Nash-
N2C3 ville, Tennessee

BINDERY

JUN 27 1949

F444
N2C3

UC SOUTHERN REGIONAL LIBRARY FACILITY



AA 000 019 190 8

Univer
Sou
Li